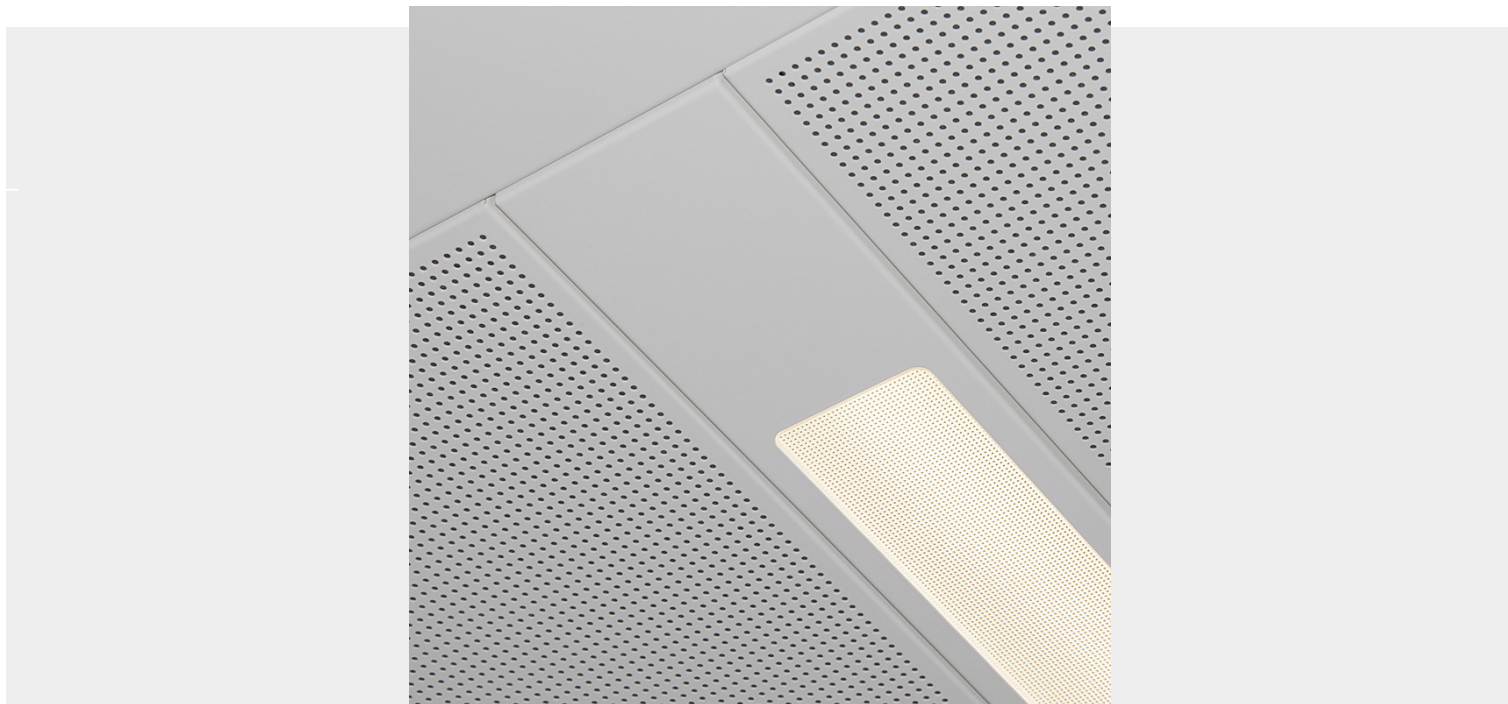


## FUSION-K



Fusion-K is a linear luminaire for use in climate ceilings with a prismatic lens (UGR <19) or an opal diffuser. The luminaires are made of steel sheet metal construction finished with a powder coating, while the fixation of the units varies depending on the climate ceiling system.

- Integrates seamless into metal ceilings
- Architectural appearance
- Equipped with a prismatic lens (UGR <19) or an opal diffuser
- C-hook mounting allows easy installation
- [Watch me in 3D in the Virtual Tour](#)

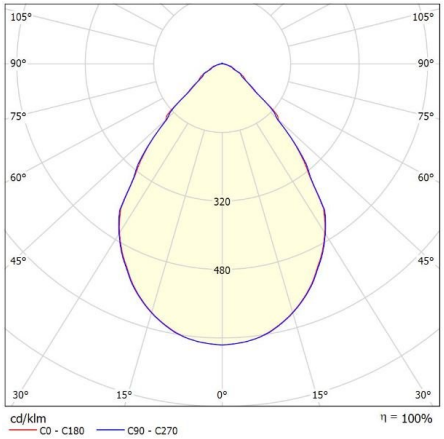
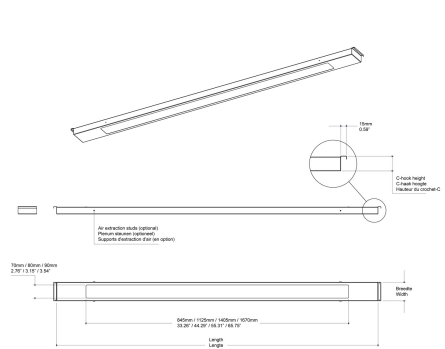
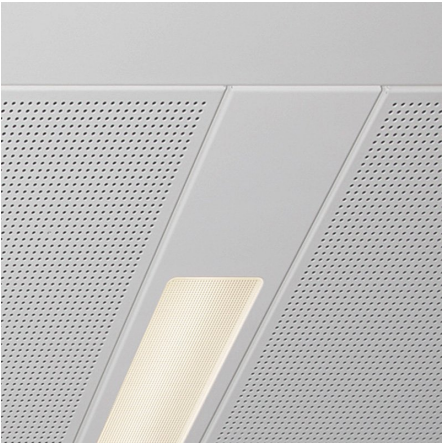
### Downloads

[Photometrics Fusion-K](#)

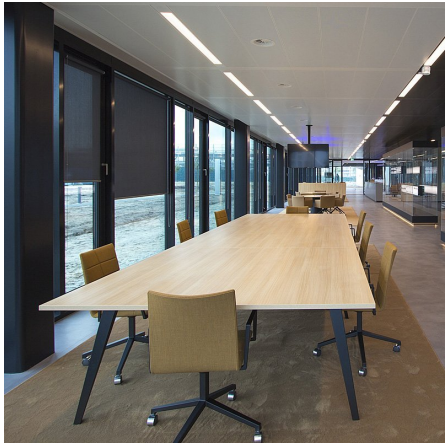
[BIM files Fusion-K](#)

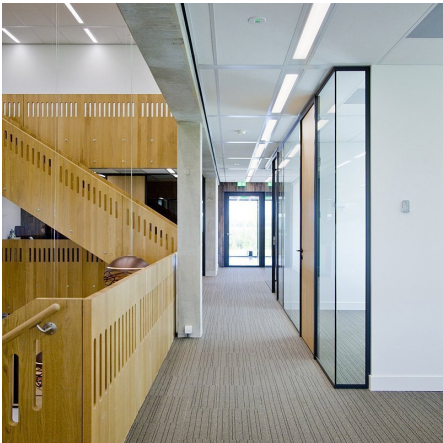
**Create your own custom made product, download the PDF specsheet or add to quote:**

PRODUCT IMAGES



f-waardering volgens UGR													
n Plafond		70	70	50	50	30	70	70	50	50	30		
n Muren		50	30	50	30	30	50	30	50	30	30		
n Vloer		20	20	20	20	20	20	20	20	20	20		
Ruimteafmeting		Perspectief dwars						Perspectief langs					
X Y		t.o.v. lampen						t.o.v. lampen					
2H	2H	17.4	18.4	17.7	18.6	18.8	17.4	18.3	17.7	18.6	18.8	18.8	
	3H	17.8	18.6	18.1	18.9	19.1	17.7	18.6	18.0	18.8	19.1	19.1	
	4H	17.9	18.7	18.3	19.0	19.3	17.9	18.7	18.3	19.0	19.3	19.3	
	6H	18.1	18.8	18.4	19.1	19.4	18.0	18.8	18.4	19.1	19.4	19.4	
	8H	18.1	18.8	18.4	19.1	19.4	18.1	18.7	18.4	19.1	19.4	19.4	
	12H	18.1	18.8	18.5	19.1	19.4	18.1	18.7	18.4	19.1	19.4	19.4	
4H	2H	17.5	18.3	17.8	18.5	18.8	17.4	18.2	17.8	18.5	18.8	18.8	
	3H	17.9	18.6	18.3	18.9	19.3	17.9	18.6	18.3	18.9	19.2	19.2	
	4H	18.2	18.8	18.6	19.2	19.5	18.2	18.8	18.6	19.1	19.5	19.5	
	6H	18.4	18.9	18.8	19.3	19.7	18.4	18.9	18.8	19.3	19.7	19.7	
	8H	18.5	18.9	18.9	19.3	19.7	18.5	18.9	18.9	19.3	19.7	19.7	
	12H	18.5	18.9	19.0	19.4	19.8	18.5	18.9	19.0	19.3	19.8	19.8	
8H	4H	18.3	18.7	18.7	19.1	19.5	18.3	18.7	18.7	19.1	19.5	19.5	
	6H	18.5	18.9	19.0	19.3	19.8	18.5	18.9	19.0	19.3	19.8	19.8	
	8H	18.6	18.9	19.1	19.4	19.9	18.6	18.9	19.1	19.3	19.8	19.8	
	12H	18.7	19.0	19.2	19.4	20.0	18.7	18.9	19.2	19.4	19.9	19.9	
	4H	18.3	18.7	18.7	19.1	19.5	18.3	18.7	18.7	19.1	19.5	19.5	
	6H	18.5	18.8	19.0	19.3	19.8	18.5	18.8	19.0	19.3	19.7	19.7	
12H	4H	18.3	18.7	18.7	19.1	19.5	18.3	18.7	18.7	19.1	19.5	19.5	
	6H	18.5	18.8	19.0	19.3	19.8	18.5	18.8	19.0	19.3	19.7	19.7	
	8H	18.6	18.9	19.1	19.4	19.9	18.6	18.9	19.1	19.3	19.8	19.8	
	12H	18.7	19.0	19.2	19.4	20.0	18.7	18.9	19.2	19.4	19.9	19.9	
	4H	18.3	18.7	18.7	19.1	19.5	18.3	18.7	18.7	19.1	19.5	19.5	
	6H	18.5	18.8	19.0	19.3	19.8	18.5	18.8	19.0	19.3	19.7	19.7	
Variatie op waarnemingshoeken voor lampstanden 5													
S = 1.0H		+1.2 / -1.7						+1.1 / -1.6					
S = 1.5H		+2.3 / -2.1						+2.4 / -1.9					
S = 2.0H		+3.8 / -2.8						+3.9 / -2.9					
Standaardtabel		BK02						BK02					
Correctie-optel		0.6						0.6					
Gecorrigeerde verbindingsindicatie in relatie tot 3793lm Totale lichtstroom													





NOTES

---

---

---

---

---

---

## ADDITIONAL INFORMATION

<b>Colour temperature</b>	Tunable white, 3000K, 4000K
<b>Air extraction</b>	Optional
<b>CIE Flux Code</b>	76 94 99 99 100
<b>Appliance class</b>	Class-II (or Class-1 for integrated drivers)
<b>Application</b>	Education, Hospitality, Municipality, Office, Retail
<b>Colour consistency (SDCM)</b>	SDCM = 3
<b>Colour Rendering Index (CRI)</b>	CRI80, CRI90
<b>Designed</b>	Philip Feenstra, 2014
<b>Driver position</b>	Integrated, Separate driving position
<b>Luminaire efficacy</b>	>125lm/W
<b>Expected lifetime</b>	L90B50@60.000h (Tq 25 ° C)
<b>Gross weight</b>	6.0KG
<b>Height</b>	50mm
<b>IP-class</b>	IP20 (top) / IP40 (bottom)
<b>Lighting control</b>	Dimmed 1-10V, Dimmed Bluetooth, Dimmed DALI
<b>Material</b>	Steel, Acrylate, Polycarbonate
<b>Mounting depth</b>	50mm
<b>Operational temperature</b>	-20 ° C / + 40 ° C
<b>Optic</b>	Microprismatic lens, Opal diffuser
<b>Orientation</b>	Down
<b>Power factor</b>	>0.9
<b>Primary connection</b>	GST18i3, GST18i5 pastel blue, On the driver
<b>Product colour</b>	RAL9010, RAL9016 matt
<b>Shape</b>	Rectangular
<b>Voltage / frequency</b>	220-240V, 50 / 60Hz
<b>Way of mounting</b>	Recessed
<b>Width</b>	100-150mm
<b>Number of modules</b>	3S, 4S, 5S
<b>Emergency lighting</b>	Optional 1 hour of autonomy (self-test)
<b>Packaging dimensions</b>	Bulk packaging

<b>C-hook height</b>	30mm, 40mm, 45mm
<b>Glare (UGR)</b>	<19
<b>Energy label</b>	A++
<b>Photobiological safety</b>	IEC 62471: RG1 (low risk)
<b>Fusion</b>	3S 16W 2100lm 3000K CRI80 G7 (optic 845mm), 3S 16W 2250lm 4000K CRI80 G7 (optic 845mm), 3S 19W 2400lm 3000K CRI80 G7 (optic 845mm), 3S 19W 2600lm 4000K CRI80 G7 (optic 845mm), 3S 22W 2750lm 3000K CRI80 G7 (optic 845mm), 3S 22W 2950lm 4000K CRI80 G7 (optic 845mm), 3S 24W 3050lm 3000K CRI80 G7 (optic 845mm), 3S 24W 3300lm 4000K CRI80 G7 (optic 845mm), 3S 29W 3550lm 3000K CRI80 G7 (optic 845mm), 3S 29W 3850lm 4000K CRI80 G7 (optic 845mm), 4S 16W 2100lm 3000K CRI80 G7 (optic 1125mm), 4S 16W 2250lm 4000K CRI80 G7 (optic 1125mm), 4S 18W 2450lm 3000K CRI80 G7 (optic 1125mm), 4S 18W 2650lm 4000K CRI80 G7 (optic 1125mm), 4S 21W 2750lm 3000K CRI80 G7 (optic 1125mm), 4S 21W 3000lm 4000K CRI80 G7 (optic1125mm), 4S 24W 3100lm 3000K CRI80 G7 (optic 1125mm), 4S 24W 3350lm 4000K CRI80 G7 (optic1125mm), 4S 28W 3600lm 3000K CRI80 G7 (optic 1125mm), 4S 28W 3900lm 4000K CRI80 G7 (optic1125mm), 4S 33W 3550lm Tunable White CRI80 G7 (optic 1125mm), 5S 15W 2100lm 3000K CRI80 G7 (optic1405mm), 5S 15W 2250lm 4000K CRI80 G7 (optic1405mm), 5S 18W 2450lm 3000K CRI80 G7 (optic 1405mm), 5S 18W 2650lm 4000K CRI80 G7 (optic1405mm), 5S 21W 2800lm 3000K CRI80 G7 (optic1405mm), 5S 21W 3000lm 4000K CRI80 G7 (optic 1405mm), 5S 24W 3150lm 3000K CRI80 G7 (optic1405mm), 5S 24W 3350lm 4000K CRI80 G7 (optic1405mm), 5S 28W 3650lm 3000K CRI80 G7 (optic1405mm), 5S 28W 3900lm 4000K CRI80 G7 (optic1405mm), 5S 33W 3550lm Tunable White CRI80 G7 (optic 1405mm), Version to be determined
<b>Length</b>	900mm-1720mm

