

MESON ROUND 190-C



Meson round 190-C is a surface mounted high performance LED downlight containing power LEDs covered by a prismatic lens or a dual satinized diffuser. The cover is mounted recessed into the trim in combination with a matt or specular glare reducing reflector.

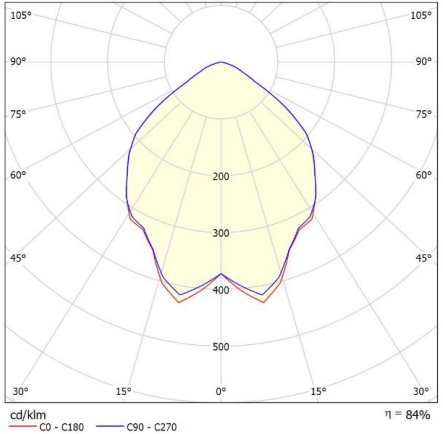
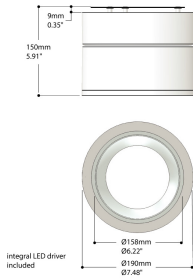
- Housing in matt white or matt black
- Inside reflector trim available glossy anodized, matt anodized, matt black or matt white
- Opal diffuser or prismatic lens
- Versions with emergency lighting available

Downloads

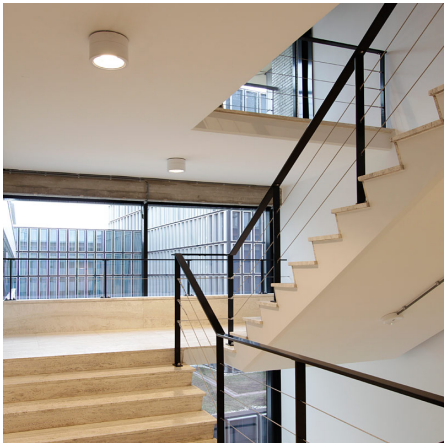
[Photometrics Meson round 190-C](#)

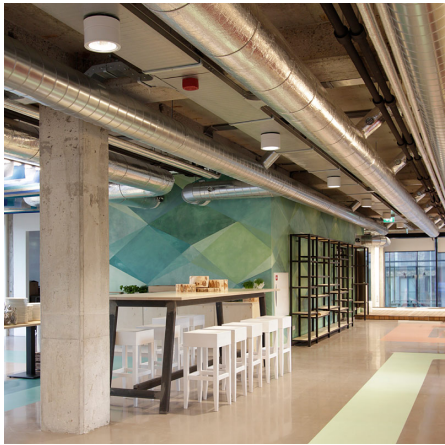
Create your own custom made product, download the PDF specsheet or add to quote:

PRODUCT IMAGES



f-waardering volgens UGR												
p Plafond		70	70	50	50	30	70	70	50	50	30	
p Muren		50	30	50	30	30	50	30	50	30	30	
p Vloer		20	20	20	20	20	20	20	20	20	20	
Ruimteafmeting X Y		Perspectief dwars t.o.v. lampen					Perspectief langs t.o.v. lampen					
2H	2H	18.9	20.0	19.1	20.2	20.4	18.9	20.0	19.1	20.2	20.4	
	3H	18.9	20.0	19.3	20.2	20.5	18.9	19.9	19.2	20.2	20.4	
	4H	18.9	19.9	19.2	20.1	20.4	18.9	19.8	19.2	20.1	20.4	
	6H	18.9	19.7	19.2	20.0	20.3	18.8	19.7	19.2	20.0	20.3	
	8H	18.8	19.6	19.2	20.0	20.3	18.8	19.6	19.2	19.9	20.2	
	12H	18.8	19.6	19.2	19.9	20.2	18.8	19.6	19.1	19.9	20.2	
4H	2H	18.9	19.9	19.2	20.1	20.4	18.9	19.8	19.2	20.1	20.4	
	3H	19.1	19.8	19.4	20.2	20.5	19.0	19.8	19.4	20.1	20.5	
	4H	19.1	19.7	19.5	20.1	20.4	19.0	19.7	19.4	20.1	20.4	
	6H	19.0	19.6	19.4	20.0	20.4	19.0	19.6	19.4	20.0	20.3	
	8H	19.0	19.5	19.4	19.9	20.3	19.0	19.5	19.4	19.9	20.3	
	12H	18.9	19.4	19.4	19.8	20.3	18.9	19.4	19.4	19.8	20.2	
8H	4H	19.0	19.5	19.4	19.9	20.3	19.0	19.5	19.4	19.9	20.3	
	6H	18.9	19.4	19.4	19.8	20.2	18.9	19.4	19.4	19.8	20.2	
	8H	18.9	19.3	19.4	19.7	20.2	18.9	19.3	19.4	19.7	20.2	
	12H	18.9	19.2	19.3	19.7	20.2	18.8	19.2	19.3	19.6	20.1	
	4H	19.0	19.4	19.4	19.8	20.3	18.9	19.4	19.4	19.8	20.3	
	6H	18.9	19.3	19.4	19.7	20.2	18.9	19.3	19.4	19.7	20.2	
12H	8H	18.9	19.2	19.3	19.7	20.2	18.8	19.2	19.3	19.6	20.1	
	12H	18.9	19.2	19.3	19.7	20.2	18.8	19.2	19.3	19.6	20.1	
Variatie op waardenperspectief voor lampstanden S												
S = 1.0H		+0.6 / -1.2					+0.6 / -1.1					
S = 1.5H		+1.7 / -4.2					+1.7 / -4.3					
S = 2.0H		+3.2 / -5.7					+3.2 / -5.9					
Standtafel		BK01					BK01					
Correctie-optel							0.5					
Gecorrigeerde verblindingindicatie in relatie tot 2041lm Totale lichtstroom												





NOTES

ADDITIONAL INFORMATION

Appliance class	Class-I
Application	Education, Hospitality, Municipality, Office, Retail
CIE Flux Code	60 93 99 100 84
Colour consistancy (SDCM)	SDCM=2
Colour Rendering Index (CRI)	CRI80, CRI90
Colour temperature	Tunable white, 3000K, 4000K
Designed	Philip Feenstra, 2013
Driver position	Integrated
Luminaire efficacy	100-120lm/W
Emergency lighting	Optional
Expected lifetime	L90B50@60.000h (Tq 25 ° C)
Glare (UGR)	<19, UGR>19
Gross weight	1.8KG
Height	150mm
Lighting control	Optional
Material	Steel, Aluminum, Acrylate
Operational temperature	-20 ° C / + 40 ° C
Packaging dimensions	200x200x200mm
Power factor	>0.9
Primary connection	On the driver
Voltage / frequency	220-240V, 50 / 60Hz
Way of mounting	Ceiling mount
Shape	Round
Energy label	A++
Orientation	Down
Number of modules	1
IP-class	IP20 (top) / IP40 (bottom)
Meson round 190	Version to be determined, 6W 700lm 3000K CRI80 G8, 6W 700lm 4000K CRI80 G8, 9W 1150lm 3000K CRI80 G8, 9W 1200lm 4000K CRI80 G8, 16W 1800lm 3000K CRI80 G8, 16W 1850lm 4000K CRI80 G8, 20W 2200lm 3000K CRI80 G8, 20W 2250lm 4000K CRI80 G8

Optic	Microprismatic lens, Opal diffuser
Reflector	Glossy anodized, Matt anodized
Product colour	Matt white, Matte Black
Width	190mm
Length	190mm
Photobiological safety	IEC 62471: RG1 (low risk)

