

FUSION-SAPP

Fusion-SAPP, a linear luminaire with a prismatic lens or an opal diffuser for use in Interalu SAPP® ceilings. This LED luminaire was developed as an alternative to T5 linear fluorescent luminaires for application in both renovation and new construction projects.

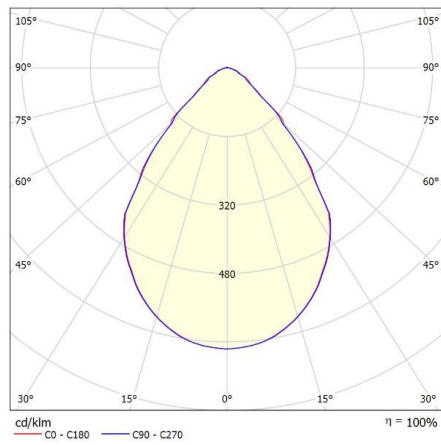
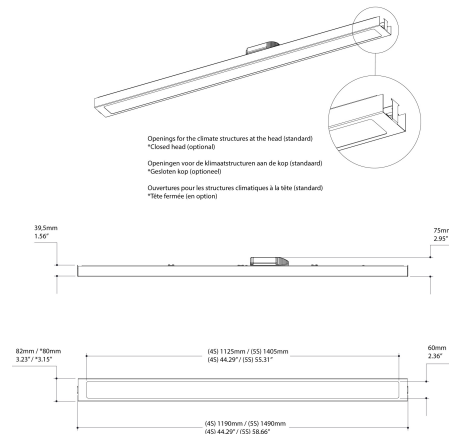
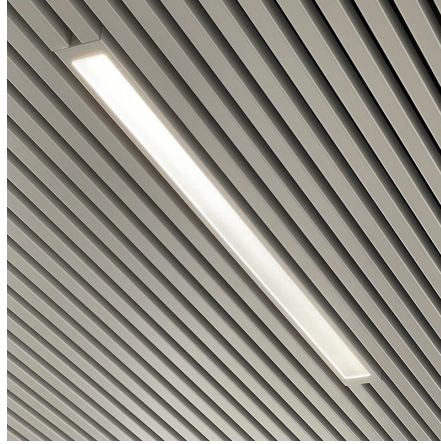
- Seamlessly integrates into Interalu SAPP® ceilings
- Architectural appearance
- Available in two lengths: 1190mm and 1490mm
- Equipped with a prismatic lens (UGR < 19) or an opal diffuser<

Downloads

[Photometrics Fusion-SAPP](#)

Categories: [Climate ceiling fixtures](#), [Baffle luminaires](#)





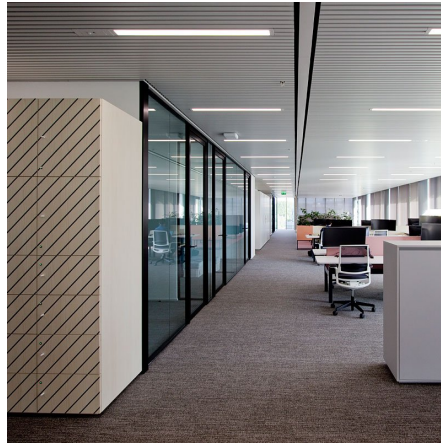
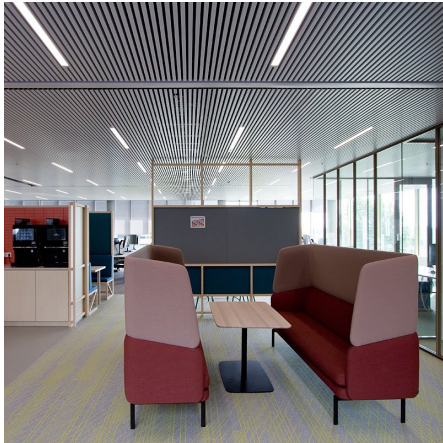
f-waardes volgens UGR												
		30	70	50	50	30	70	50	50	30	30	
p. Pfandf		50	30	30	50	30	30	50	30	50	30	
p. Muren		50	30	30	50	30	30	50	30	50	30	
p. Vloer		20	20	20	20	20	20	20	20	20	20	
Ruimteafmeting	X	Perspectief dwars					X	Perspectief langs				
	Y	t.o.v. lampen						t.o.v. lampen				
2H	2H	17,4	18,4	17,7	18,6	18,8	17,4	17,3	17,7	18,6	18,8	
	4H	17,8	18,6	18,1	18,8	19,1	17,7	18,6	18,0	18,8	19,1	
	6H	17,9	18,7	18,3	19,0	19,3	17,9	18,7	18,3	19,0	19,3	
	8H	18,1	18,8	18,4	19,1	19,4	18,0	18,8	18,4	19,1	19,4	
	12H	18,1	18,8	18,4	19,1	19,4	18,1	18,7	18,4	19,1	19,4	
	12H	18,1	18,8	18,5	19,1	19,4	18,1	18,7	18,4	19,1	19,4	
4H	2H	17,5	18,3	17,8	18,5	18,8	17,4	18,2	17,8	18,5	18,8	
	4H	17,9	18,6	18,3	18,9	19,3	17,9	18,6	18,3	18,9	19,3	
	6H	18,2	18,8	18,6	19,2	19,5	18,2	18,8	18,6	19,2	19,5	
	8H	18,4	18,9	18,8	19,3	19,7	18,4	18,9	18,8	19,3	19,7	
	12H	18,5	18,9	18,9	19,3	19,7	18,5	18,9	18,9	19,3	19,7	
	12H	18,5	18,9	19,0	19,4	19,8	18,5	18,9	19,0	19,3	19,8	
8H	2H	18,3	18,7	18,7	19,1	19,5	18,3	18,7	18,7	19,1	19,5	
	4H	18,5	18,9	19,0	19,3	19,8	18,5	18,9	19,0	19,3	19,8	
	6H	18,6	18,9	19,1	19,4	19,9	18,6	18,9	19,1	19,3	19,8	
	12H	18,7	19,0	19,2	19,4	20,0	18,7	19,0	19,2	19,4	20,0	
12H	2H	18,3	18,7	18,7	19,1	19,5	18,3	18,7	18,7	19,1	19,5	
	4H	18,5	18,8	19,0	19,3	19,8	18,5	18,8	19,0	19,3	19,8	
	6H	18,6	18,9	19,1	19,3	19,9	18,6	18,9	19,1	19,3	19,9	
	12H	18,6	18,9	19,1	19,3	19,9	18,6	18,9	19,1	19,3	19,9	

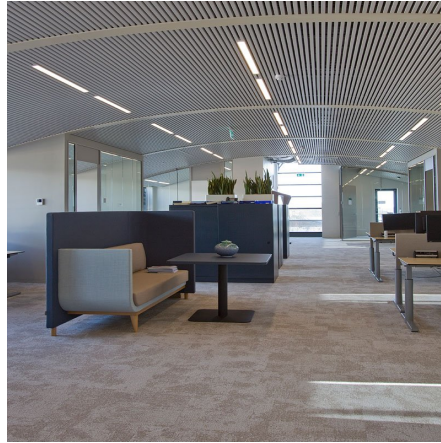
Variantie op waarnemingsfout voor lampstanden 5

S = 1,0H	+1,2 / -1,7	+1,4 / -1,6
S = 1,5H	+2,3 / -2,1	+2,4 / -1,9
S = 2,0H	+3,8 / -2,6	+3,9 / -2,9

Standaardtabel	BK02	BK02
Correctie-optabel		0,6

Gegeerde verblindingcijfers in relatie tot 0,95m Totale lichtstroom





Fusion-SAPP, a linear luminaire with a prismatic lens or an opal diffuser for use in Interalu SAPP® ceilings. This LED luminaire was developed as an alternative to T5 linear fluorescent luminaires for application in both renovation and new construction projects.

- Seamlessly integrates into Interalu SAPP® ceilings
- Architectural appearance
- Available in two lengths: 1190mm and 1490mm
- Equipped with a prismatic lens (UGR < 19) or an opal diffuser<

Downloads

[Photometrics Fusion-SAPP](#)

NOTES

ADDITIONAL INFORMATION

Color temperature	Tunable White, 2700K
Driver position	Attached to the fixture, Loose driver
Material	Acrylic, Polycarbonate
Energy Rating	
Kleurconsistentie (SDCM)	SDCM=3
Expected lifespan	L90B50@60,000h (Tq 25°C)
Primary connections	GST18i3, GST18i5 pastelblauw, Kabel, On the driver
Ambient temperature	-20°C / +40°C
Photobiological safety	IEC 62471: RG1 (low risc)
Color Rendering Index (CRI)	CRI80, CRI90
Lighting control	1-10V dimming, Casambi dimming, DALI dimming, Optional
Emergency lighting	1 hour emergency power, Optional, Optional 1 hour autonomy self-test
Product Color	On request, RAL9010 mat, RAL9010 mat structuur, RAL9011 mat, RAL9011 mat structuur, RAL9016 mat, RAL9016 mat structuur
Application	Education, Hospitality, Office, Public spaces
Luminaire efficacy	>133lm/W
Product family	Fusion
Optics	Microprismatic lens, Opalen diffusor
Insulation Class	Class II
Oriëntatie	Down
Power factor	>0.9
Shape	Rectangular
Product Confirmation	Recessed

