



## **MESON ROUND 190-C**

Meson round 190-C is a high-quality surface-mounted LED downlight featuring power LEDs covered by a prismatic lens or a double satin diffuser. The trim is recessed into the cover rim and combined with a matte or high-gloss glare-reducing reflector.

- Housing in matte white or matte black
- Reflector ring available in matte anodized, glossy anodized, matte black, or matte white
- Opal diffuser or prismatic lens
- Emergency lighting versions available

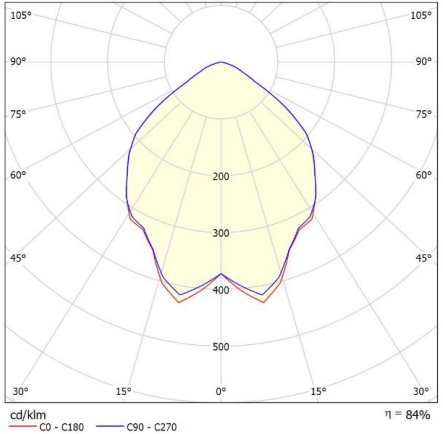
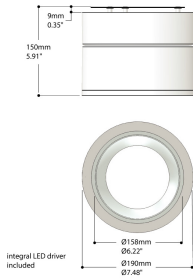
### **Downloads**

[Photometrics Meson round 190-C](#)

**Categories:** [Surface-mounted luminaires](#)



PRODUCT IMAGES



**f-waardering volgens UGR**

p Plafond	70	70	50	50	30	70	70	50	50	30
p Muren	50	30	50	30	30	50	30	50	30	30
p Vloer	20	20	20	20	20	20	20	20	20	20
Ruimteafmeting X Y	Perspectief dwars L.o.v. lampen					Perspectief langs L.o.v. lampen				
2H	2H	18.9	20.0	19.1	20.2	20.4	18.9	20.0	19.1	20.2
3H	3H	18.9	20.0	19.3	20.2	20.5	18.9	19.9	19.2	20.1
4H	4H	18.9	19.9	19.2	20.1	20.4	18.9	19.8	19.2	20.1
6H	6H	18.9	19.7	19.2	20.0	20.3	18.8	19.7	19.2	20.0
8H	8H	18.8	19.6	19.2	20.0	20.3	18.8	19.6	19.2	19.9
12H	12H	18.8	19.6	19.2	19.9	20.2	18.8	19.6	19.1	19.9
4H	2H	18.9	19.9	19.2	20.1	20.4	18.9	19.8	19.2	20.1
3H	3H	19.1	19.8	19.4	20.2	20.5	19.0	19.8	19.4	20.1
4H	4H	19.1	19.7	19.5	20.1	20.4	19.0	19.7	19.4	20.1
6H	6H	19.0	19.6	19.4	20.0	20.4	19.0	19.6	19.4	20.0
8H	8H	19.0	19.5	19.4	19.9	20.3	19.0	19.5	19.4	19.9
12H	12H	18.9	19.4	19.4	19.8	20.3	18.9	19.4	19.4	19.8
4H	4H	19.0	19.5	19.4	19.9	20.3	19.0	19.5	19.4	19.9
6H	6H	18.9	19.4	19.4	19.8	20.2	18.9	19.4	19.4	19.8
8H	8H	18.9	19.3	19.4	19.7	20.2	18.9	19.3	19.4	19.7
12H	12H	18.9	19.2	19.3	19.7	20.2	18.8	19.2	19.3	19.6
4H	4H	19.0	19.4	19.4	19.8	20.3	18.9	19.4	19.4	19.8
6H	6H	18.9	19.3	19.4	19.7	20.2	18.9	19.3	19.4	19.7
8H	8H	18.9	19.2	19.3	19.7	20.2	18.8	19.2	19.3	19.6

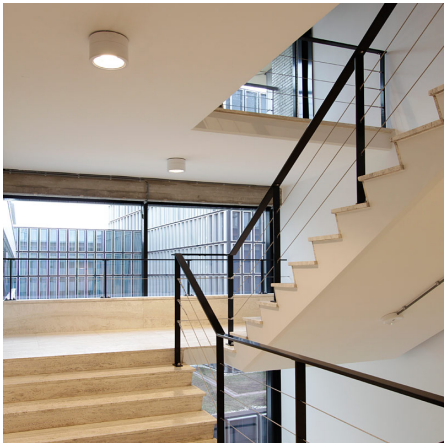
Varieer op waardenperspectief voor lampstanden S

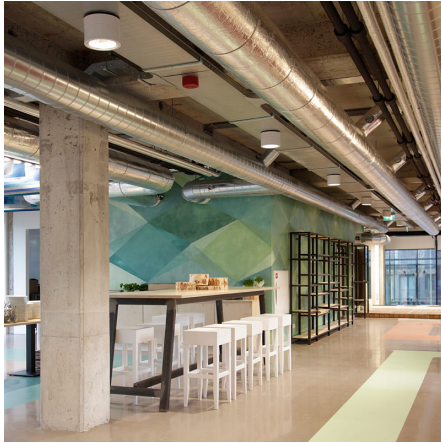
S = 1.0H	+0.6 / -1.2	+0.6 / -1.1
S = 1.5H	+1.7 / -4.2	+1.7 / -4.3
S = 2.0H	+3.2 / -5.7	+3.2 / -5.9

Standtafel B01 B01

Correctie-optel 0.5 0.5

Gecorrigeerde verblindingindicatie in relatie tot 2041lm Totale lichtstroom





Meson round 190-C is a high-quality surface-mounted LED downlight featuring power LEDs covered by a prismatic lens or a double satin diffuser. The trim is recessed into the cover rim and combined with a matte or high-gloss glare-reducing reflector.

- Housing in matte white or matte black
- Reflector ring available in matte anodized, glossy anodized, matte black, or matte white
- Opal diffuser or prismatic lens
- Emergency lighting versions available

#### Downloads

[Photometrics Meson round 190-C](#)

NOTES

---

---

---

---

---

---

## ADDITIONAL INFORMATION

<b>Insulation Class</b>	Class-I
<b>IP Rating</b>	
<b>Photobiological safety</b>	IEC 62471: RG1 (low risc)
<b>Color temperature</b>	Tunable White, 2700K
<b>Ambient temperature</b>	-20°C / +40°C
<b>Lighting control</b>	1-10V dimming, Casambi dimming, DALI dimming, Optional
<b>Emergency lighting</b>	1 hour emergency power, Optional, Optional 1 hour autonomy self-test
<b>Product Color</b>	Matte black, Matte white, On request
<b>Application</b>	Education, Hospitality, Office, Public spaces
<b>Optics</b>	Microprismatic lens, Opalen diffusor
<b>Self-adhesive dust cover</b>	
<b>Spot bundle (FWHM)</b>	
<b>Primary connections</b>	On the driver
<b>Packaging dimensions</b>	
<b>Luminaire efficacy</b>	
<b>Air extraction</b>	
<b>Product family</b>	Meson
<b>Driver position</b>	Integrated
<b>Material</b>	Acrylic, Aluminum, Steel
<b>Oriëntatie</b>	Down
<b>CIE Flux code</b>	
<b>Kleurconsistentie (SDCM)</b>	SDCM=2
<b>Color Rendering Index (CRI)</b>	CRI80, CRI90
<b>Expected lifespan</b>	L90B50@60,000h (Tq 25°C)
<b>Product Glare (UGR)</b>	
<b>Hight</b>	
<b>Power factor</b>	>0.9
<b>Voltage / frequency</b>	
<b>Product Confirmation</b>	Ceiling mounting
<b>Shape</b>	Round

**Energy Rating**

**Width**

**Lengte**

