



METRONOME-S WHITE

Metronome-S white is a linear LED pendant luminaire equipped with 36 or 28 lenses, recessed behind a grid-shaped louver. The optics are positioned at the bottom as standard, and versions with direct and indirect lighting (UP/DOWN) are also available. A choice can be made between < optics (standard) and <16

- Architectural appearance with 36 or 28 optics
- Choice between UGR< 19 and UGR< 16 optics
- Louver finish white
- Versions with direct and indirect lighting (UP/DOWN) are available

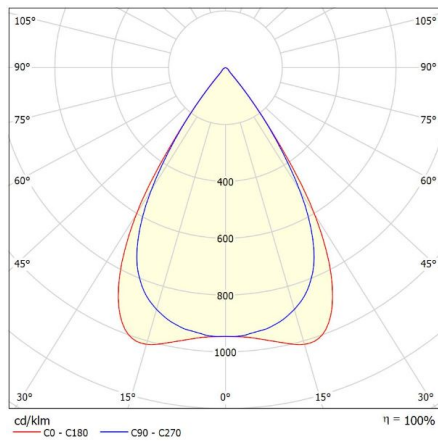
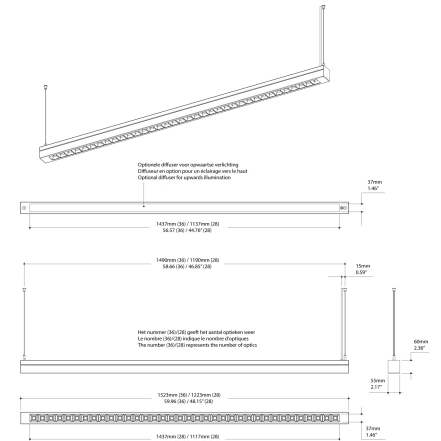
Downloads

[Photometrics Metronome-S](#)

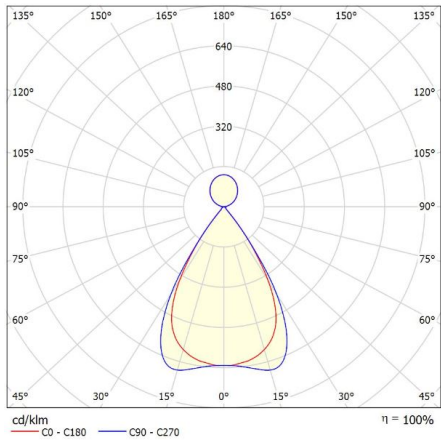
Categories: [Pendant luminaires](#)



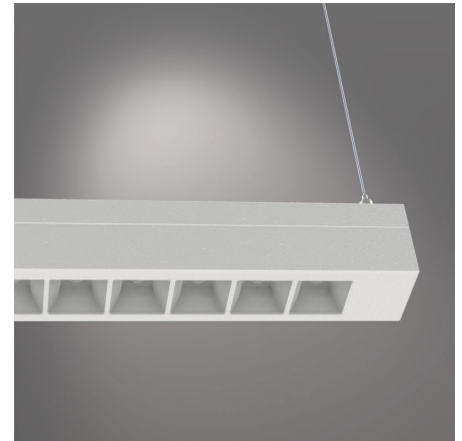
PRODUCT IMAGES

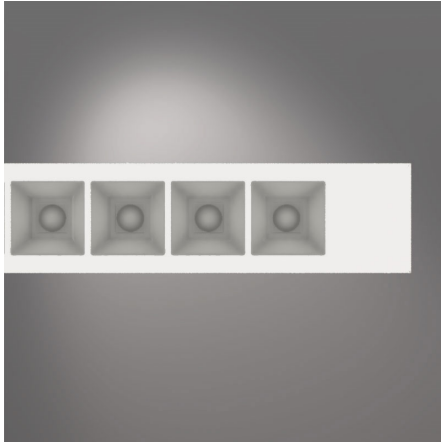


Glare Evaluation According to UGR												
p Ceiling	70	70	50	50	30	30	70	70	50	50	30	30
p Walls	50	30	50	30	30	30	50	30	50	30	30	30
p Floor	20	20	20	20	20	20	20	20	20	20	20	20
Room Size X Y	Viewing direction at right angles to lamp axis						Viewing direction parallel to lamp axis					
2H	2H	15.9	16.6	16.2	16.8	17.0	15.2	15.9	15.3	16.1	16.3	
	3H	15.8	16.5	16.1	16.7	16.9	15.1	15.7	15.4	16.0	16.2	
	4H	15.8	16.4	16.1	16.6	16.9	15.1	15.7	15.4	15.9	16.2	
	6H	15.7	16.3	16.0	16.5	16.8	15.0	15.5	15.3	15.8	16.1	
	8H	15.7	16.2	16.0	16.5	16.8	15.0	15.5	15.3	15.8	16.1	
4H	12H	15.7	16.1	16.0	16.4	16.7	14.9	15.4	15.3	15.7	16.0	
	2H	15.8	16.3	16.1	16.6	16.9	15.1	15.6	15.4	15.9	16.1	
	3H	15.7	16.2	16.0	16.5	16.8	15.0	15.5	15.3	15.8	16.1	
	4H	15.6	16.0	16.0	16.4	16.7	14.9	15.4	15.3	15.7	16.0	
	6H	15.6	15.9	16.0	16.3	16.7	14.9	15.2	15.3	15.6	16.0	
8H	12H	15.5	15.8	15.9	16.2	16.6	14.8	15.1	15.3	15.5	15.9	
	2H	15.5	15.8	15.9	16.2	16.6	14.8	15.1	15.3	15.5	15.9	
	3H	15.5	15.7	15.9	16.1	16.6	14.8	15.0	15.2	15.4	15.9	
	4H	15.4	15.6	15.9	16.1	16.5	14.7	14.9	15.2	15.4	15.8	
	6H	15.4	15.5	15.9	16.0	16.5	14.7	14.8	15.2	15.3	15.8	
12H	2H	15.5	15.8	15.9	16.2	16.6	14.8	15.1	15.3	15.5	15.9	
	3H	15.5	15.7	15.9	16.1	16.6	14.8	15.0	15.2	15.4	15.9	
	4H	15.4	15.6	15.9	16.1	16.5	14.7	14.9	15.2	15.4	15.8	
	6H	15.4	15.5	15.9	16.0	16.5	14.7	14.9	15.2	15.3	15.8	
	8H	15.4	15.5	15.9	16.0	16.5	14.7	14.8	15.2	15.3	15.8	
Variation of the observer position for the luminaire distances S												
S = 1.0H	+5.6 / -8.4						+5.2 / -7.9					
S = 1.5H	+8.4 / -9.2						+7.9 / -8.8					
S = 2.0H	+10.4 / -10.5						+9.9 / -9.7					
Standard table	BK00						BK00					
Correction	Summand						Summand					
	-2.7						-3.4					
Corrected Glare Indices referring to 4232lm Total Luminaire Flux												



f-waardering volgens UGR												
p Plafond	70	70	50	50	30	70	70	50	50	30	30	
p Muren	50	30	50	30	30	50	30	50	30	30	30	
p Vloer	20	20	20	20	20	20	20	20	20	20	20	
Ruimteafmeting	Perspectief divers					Perspectief langs						
X Y	t.o.v. lampen					t.o.v. lampen						
2H	2H	16.7	17.4	16.9	17.6	17.8	16.0	16.7	16.2	16.8	17.0	
	3H	16.6	17.2	16.9	17.5	17.7	15.9	16.5	16.2	16.7	17.0	
	4H	16.5	17.1	16.9	17.4	17.6	15.8	16.4	16.1	16.7	16.9	
	6H	16.5	17.0	16.8	17.3	17.6	15.8	16.3	16.1	16.6	16.9	
	8H	16.4	17.0	16.8	17.2	17.5	15.7	16.3	16.1	16.5	16.8	
4H	12H	16.4	16.9	16.8	17.2	17.5	15.7	16.2	16.1	16.5	16.8	
	2H	16.5	17.1	16.8	17.4	17.6	15.8	16.4	16.1	16.6	16.9	
	3H	16.4	16.9	16.8	17.2	17.5	15.7	16.2	16.1	16.5	16.8	
	4H	16.4	16.8	16.8	17.1	17.5	15.7	16.1	16.1	16.4	16.8	
	6H	16.3	16.7	16.7	17.0	17.4	15.6	16.0	16.0	16.3	16.7	
8H	12H	16.3	16.6	16.7	17.0	17.4	15.6	15.9	16.0	16.3	16.7	
	2H	16.3	16.6	16.7	17.0	17.4	15.6	15.9	16.0	16.3	16.7	
	3H	16.2	16.5	16.7	16.9	17.3	15.5	15.8	16.0	16.2	16.6	
	4H	16.2	16.4	16.6	16.8	17.3	15.5	15.7	16.0	16.1	16.6	
	6H	16.1	16.3	16.6	16.8	17.2	15.5	15.6	15.9	16.1	16.6	
12H	2H	16.3	16.5	16.7	16.9	17.3	15.6	15.8	16.0	16.2	16.6	
	3H	16.2	16.4	16.6	16.8	17.3	15.5	15.7	16.0	16.1	16.6	
	4H	16.2	16.4	16.6	16.8	17.3	15.5	15.7	16.0	16.1	16.6	
	6H	16.1	16.3	16.6	16.8	17.2	15.5	15.6	15.9	16.1	16.6	
	8H	16.1	16.3	16.6	16.8	17.2	15.5	15.6	15.9	16.1	16.6	
Variatie op waarnemerspositie voor lampafstanden S												
S = 1.0H	+5.6 / -8.4					+5.2 / -7.9						
S = 1.5H	+8.4 / -9.2					+7.9 / -8.8						
S = 2.0H	+10.4 / -10.5					+9.9 / -9.7						
Standartaftabel	BK00					BK00						
Correctie-optel	-1.9					-2.6						
Gecorrigeerde verblindingindicatie in relatie tot 409lm Totale lichtstroom												





Metronome-S white is a linear LED pendant luminaire equipped with 36 or 28 lenses, recessed behind a grid-shaped louver. The optics are positioned at the bottom as standard, and versions with direct and indirect lighting (UP/DOWN) are also available. A choice can be made between \leq optics (standard) and ≤ 16

- Architectural appearance with 36 or 28 optics
- Choice between $UGR < 19$ and $UGR < 16$ optics
- Louver finish white
- Versions with direct and indirect lighting (UP/DOWN) are available

Downloads

[Photometrics Metronome-S](#)

NOTES

ADDITIONAL INFORMATION

Application	Education, Hospitality, Office, Public spaces
Shape	Rectangular
Energy Rating	
Product Glare (UGR)	
Color temperature	Tunable White, 2700K
Voltage / frequency	
Expected lifespan	L90B50@60,000h (Tq 25°C)
Color Rendering Index (CRI)	CRI80, CRI90
IP Rating	IP20 (upwards)/IP40 (downwards)
Lighting control	1-10V dimming, Casambi dimming, DALI dimming, Optional
Emergency lighting	1 hour emergency power, Optional, Optional 1 hour autonomy self-test
Primary connections	GST18i3, GST18i5 pastelblauw, Kabel
Product Color	On request, RAL9010 mat, RAL9010 mat structuur, RAL9011 mat, RAL9011 mat structuur, RAL9016 mat, RAL9016 mat structuur
Insulation Class	Class II, Class-I
Self-adhesive dust cover	No
Spot bundle (FWHM)	
Luminaire efficacy	>155lm/W
Air extraction	N/A
Product family	Metronome
Product Confirmation	Pendant
Optics	Lens en louver
Material	Plastic, Steel
Lengte	
Width	50mm
Packaging dimensions	Bulk packaging
CIE Flux code	96 99 100 100 100
Power factor	>0.9
Driver position	Integrated
Ambient temperature	-20°C / +40°C

Kleurconsistentie (SDCM)

SDCM=3

Oriëntatie

Down, Up+Down

Photobiological safety

IEC 62471: RG1 (low risc)

Hight

