



## NANO 35 BLACK

Nano 35 is a directional & recessed spotlight with a 36° lens. This spotlight is an elegant miniature recessed spot that can be used both as a directional spot and recessed spotlight.

- Miniature adjustable spotlight (ø35mm) that can also be pushed up until it sits completely recessed in the ceiling
- Equipped with a 36° FWHM lens
- High color rendering index (CRI>90)>
- On-off version, DALI dimmable and Casambi dimmable versions available

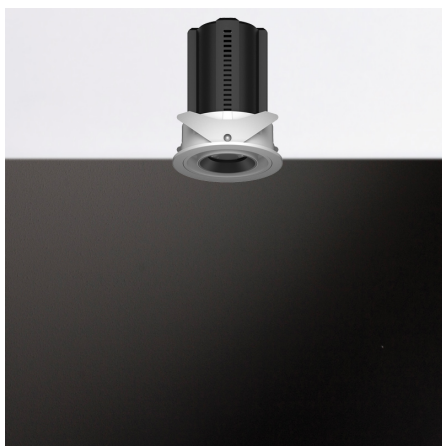
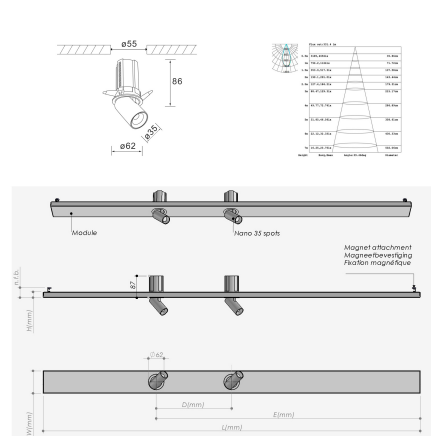
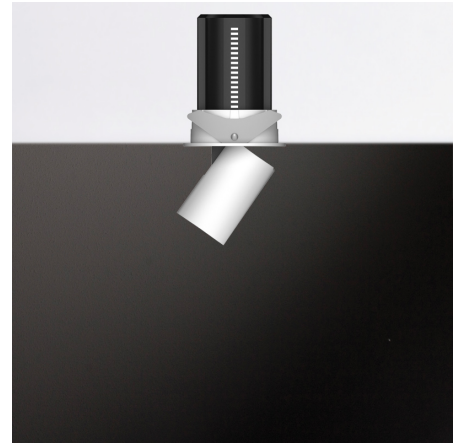
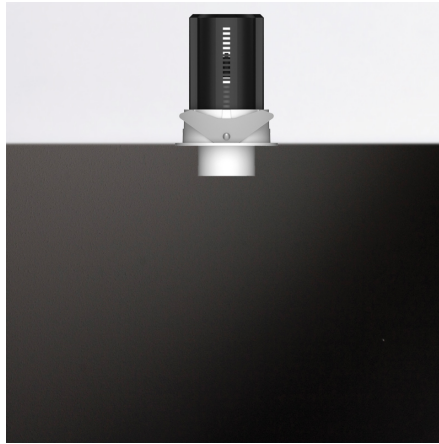
### Downloads

[Photometrics Nano 35](#)

**Categories:** [Downlights and recessed spotlights](#)



## PRODUCT IMAGES



Nano 35 is a directional & recessed spotlight with a 36° lens. This spotlight is an elegant miniature recessed spot that can be used both as a directional spot and recessed spotlight.

- Miniature adjustable spotlight (ø35mm) that can also be pushed up until it sits completely recessed in the ceiling
- Equipped with a 36° FWHM lens
- High color rendering index (CRI>90)>
- On-off version, DALI dimmable and Casambi dimmable versions available

## Downloads

[Photometrics Nano 35](#)

NOTES

---

---

---

---

---

---

## ADDITIONAL INFORMATION

<b>Insulation Class</b>	Class-I
<b>Application</b>	Education, Hospitality, Office, Public spaces
<b>Energy Rating</b>	
<b>Color temperature</b>	2700K
<b>Kleurconsistentie (SDCM)</b>	SDCM=2
<b>Voltage / frequency</b>	
<b>Primary connections</b>	GST18i3, GST18i5 pastelblauw, Kabel, On the driver
<b>Color Rendering Index (CRI)</b>	CRI80, CRI90, CRI97
<b>Material</b>	Aluminum, Plastic
<b>Packaging dimensions</b>	Bulk packaging
<b>Product Glare (UGR)</b>	Not applicable
<b>IP Rating</b>	
<b>Lighting control</b>	1-10V dimming, Casambi dimming, DALI dimming, Optional
<b>Emergency lighting</b>	1 hour emergency power, Optional, Optional 1 hour autonomy self-test
<b>Product Color</b>	Matte black, Matte white, On request
<b>Self-adhesive dust cover</b>	No
<b>Luminaire efficacy</b>	>70lm/W
<b>Air extraction</b>	N/A
<b>Driver position</b>	Loose driver
<b>Expected lifespan</b>	L90B50@50.000h (Tq 25°C)
<b>Ambient temperature</b>	-20°C / +40°C
<b>Optics</b>	Lens
<b>Oriëntatie</b>	Down
<b>Power factor</b>	>0.9
<b>Shape</b>	Round
<b>Spot bundle (FWHM)</b>	36°
<b>Product Confirmation</b>	Recessed
<b>Lengte</b>	
<b>Width</b>	
<b>Photobiological safety</b>	IEC 62471: RG1 (low risc)

**ANSI/IES TM-30-18**

Erkend

