



## **ULTRALIGHT-SAPP**

Ultralight-SAPP is an elegant, slim LED luminaire equipped with a row of mid-power LEDs, each featuring an individual lens and louvre. This luminaire is specially designed for use in linear lamella ceilings.

- Elegant slim line design for the use in linear lamella ceilings
- Excellent low-glare light task lighting according to EN-12.464/1 for use in offices
- Available in a decorative matt white or matt white textured coating

### **Downloads**

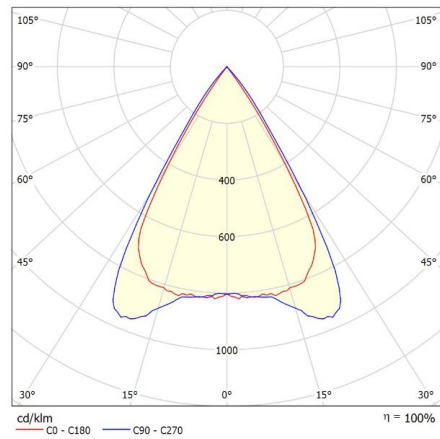
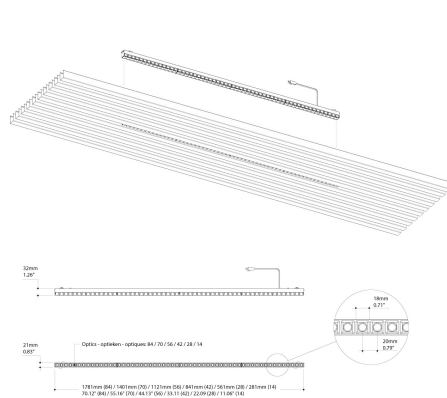
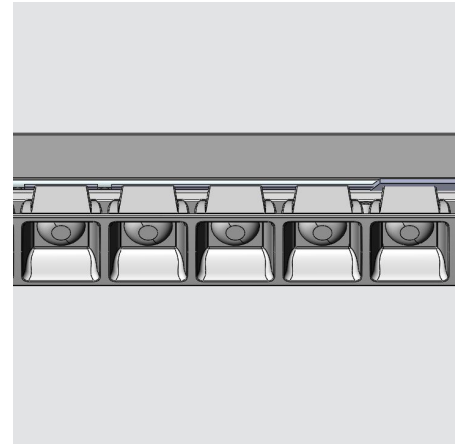
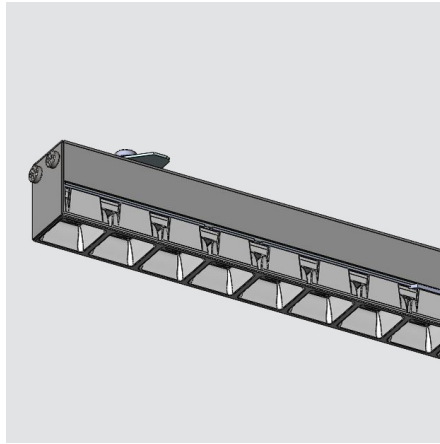
[Photometrics Ultralight](#)

**Create your own custom made product, download the PDF specs sheet or add to quote:**

**Categories:** [Baffle luminaires](#)



## PRODUCT IMAGES

[illegible]

Ultralight-SAPP is an elegant, slim LED luminaire equipped with a row of mid-power LEDs, each featuring an individual lens and louvre. This luminaire is specially designed for use in linear lamella ceilings.

- Elegant slim line design for the use in linear lamella ceilings
- Excellent low-glare light task lighting according to EN-12.464/1 for use in offices
- Available in a decorative matt white or matt white textured coating

## Downloads

## Photometrics Ultralight

**Create your own custom made product, download the PDF specsheet or add to quote:**

NOTES

---

---

---

---

---

---

## ADDITIONAL INFORMATION

<b>Driver position</b>	Loose driver
<b>Application</b>	
<b>Shape</b>	Rectangular
<b>IP Rating</b>	
<b>Photobiological safety</b>	IEC 62471: RG1 (low risc)
<b>Kleurconsistentie (SDCM)</b>	SDCM=3
<b>Ambient temperature</b>	-20°C / +40°C
<b>Color temperature</b>	Tunable White, 2700K
<b>Lighting control</b>	1-10V dimming, Casambi dimming, DALI dimming, Optional
<b>Emergency lighting</b>	1 hour emergency power, Optional, Optional 1 hour autonomy self-test
<b>Primary connections</b>	GST18i3, GST18i5 pastelblauw, Kabel, On the driver
<b>Product Color</b>	On request, RAL9010 mat, RAL9010 mat structuur, RAL9011 mat, RAL9011 mat structuur, RAL9016 mat, RAL9016 mat structuur
<b>Spot bundle (FWHM)</b>	Not applicable
<b>Luminaire efficacy</b>	>133lm/W
<b>Air extraction</b>	
<b>Product Confirmation</b>	Ceiling mounting
<b>Optics</b>	Lens en louver
<b>Material</b>	Plastic, Steel
<b>Lengte</b>	
<b>Width</b>	
<b>Packaging dimensions</b>	
<b>Color Rendering Index (CRI)</b>	CRI80, CRI90
<b>Product Glare (UGR)</b>	
<b>CIE Flux code</b>	
<b>Expected lifespan</b>	L90B50@60,000h (Tq 25°C)
<b>Voltage / frequency</b>	220-240V, 50 / 60Hz
<b>Power factor</b>	>0.9
<b>Insulation Class</b>	Class II
<b>Oriëntatie</b>	Down

**Self-adhesive dust cover**

**Energy Rating**

**Hight**

