

FUSION-SAPP

Fusion-SAPP, a linear luminaire with a prismatic lens or an opal diffuser for use in Interalu SAPP® ceilings. This LED luminaire was developed as an alternative to T5 linear fluorescent luminaires for application in both renovation and new construction projects.

- Seamlessly integrates into Interalu SAPP® ceilings
- Architectural appearance
- Available in two lengths: 1190mm and 1490mm
- Equipped with a prismatic lens (UGR < 19) or an opal diffuser<

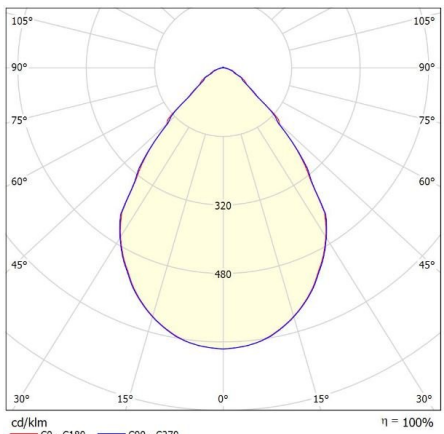
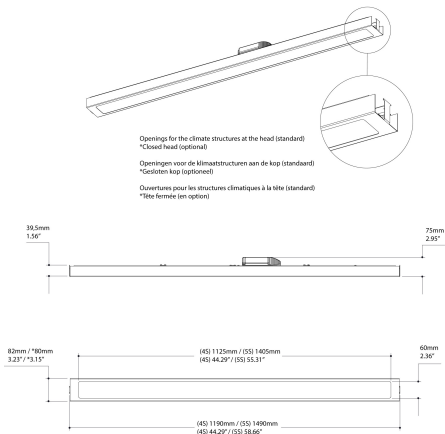
Downloads

[Photometrics Fusion-SAPP](#)

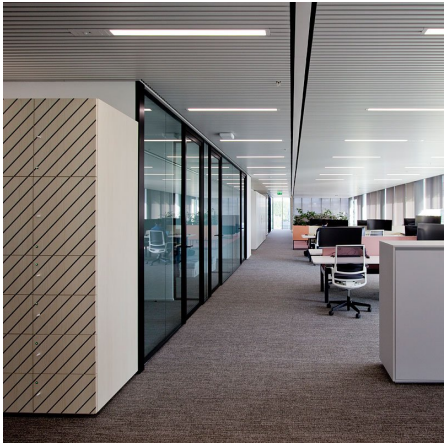
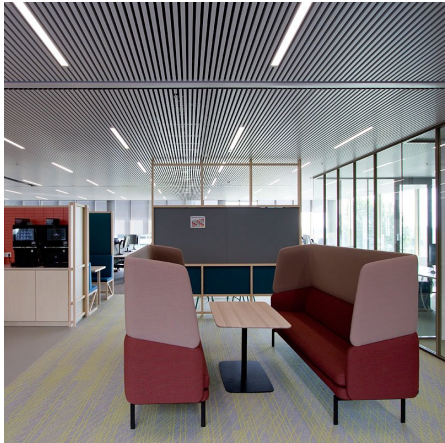
Categories: [Climate ceiling fixtures](#), [Baffle luminaires](#)

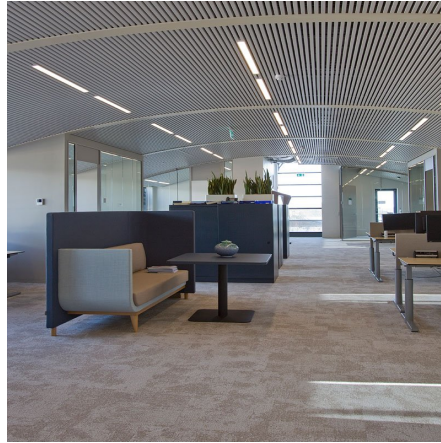


PRODUCT IMAGES



f-waardering volgens UGR											
n Plafond		70	70	50	50	30	70	70	50	50	30
n Muren		50	30	50	30	30	50	30	50	30	30
n Vloer		20	20	20	20	20	20	20	20	20	20
Ruimteafmeting X Y		Perspectief dwars t.o.v. lampenrij					Perspectief langs t.o.v. lampenrij				
2H	2H	17.4	18.4	17.7	18.6	18.8	17.4	18.3	17.7	18.6	18.8
	3H	17.8	18.6	18.1	18.9	19.1	17.7	18.6	18.0	18.8	19.1
	4H	17.9	18.7	18.3	19.0	19.3	17.9	18.7	18.3	19.0	19.3
	6H	18.1	18.8	18.4	19.1	19.4	18.0	18.8	18.4	19.1	19.4
	8H	18.1	18.8	18.4	19.1	19.4	18.1	18.7	18.4	19.1	19.4
4H	2H	17.5	18.3	17.8	18.5	18.8	17.4	18.2	17.8	18.5	18.8
	3H	17.9	18.6	18.3	18.9	19.3	17.9	18.6	18.3	18.9	19.2
	4H	18.2	18.8	18.6	19.2	19.5	18.2	18.8	18.6	19.1	19.5
	6H	18.4	18.9	18.8	19.3	19.7	18.4	18.9	18.8	19.3	19.7
	8H	18.5	18.9	18.9	19.3	19.7	18.5	18.9	18.9	19.3	19.7
8H	12H	18.5	18.9	19.0	19.4	19.8	18.5	18.9	19.0	19.3	19.8
	4H	18.3	18.7	18.7	19.1	19.5	18.3	18.7	18.7	19.1	19.5
	6H	18.5	18.9	19.0	19.3	19.8	18.5	18.9	19.0	19.3	19.8
	8H	18.6	18.9	19.1	19.4	19.9	18.6	18.9	19.1	19.3	19.8
	12H	18.7	19.0	19.2	19.4	20.0	18.7	18.9	19.2	19.4	19.9
12H	4H	18.3	18.7	18.7	19.1	19.5	18.3	18.7	18.7	19.1	19.5
	6H	18.5	18.8	19.0	19.3	19.8	18.5	18.8	19.0	19.3	19.7
	8H	18.6	18.9	19.1	19.4	19.9	18.6	18.9	19.1	19.3	19.8
	12H	18.7	19.0	19.2	19.4	20.0	18.7	18.9	19.2	19.4	19.9
	4H	18.3	18.7	18.7	19.1	19.5	18.3	18.7	18.7	19.1	19.5
Variatie op waardenrecepten voor lampstanden 5											
S = 1.0H		+1.2 / -1.7					+1.1 / -1.6				
S = 1.5H		+2.3 / -2.1					+2.4 / -1.9				
S = 2.0H		+3.8 / -2.8					+3.9 / -2.9				
Standaardtabel		BK02					BK02				
Correctie-spatiaal		0.6					0.6				
Geconserveerde verbindingsindicatie in relatie tot 3793lm Totale lichtstroom											





Fusion-SAPP, a linear luminaire with a prismatic lens or an opal diffuser for use in Interalu SAPP® ceilings. This LED luminaire was developed as an alternative to T5 linear fluorescent luminaires for application in both renovation and new construction projects.

- Seamlessly integrates into Interalu SAPP® ceilings
- Architectural appearance
- Available in two lengths: 1190mm and 1490mm
- Equipped with a prismatic lens (UGR < 19) or an opal diffuser<

Downloads

[Photometrics Fusion-SAPP](#)

NOTES

ADDITIONAL INFORMATION

Kleurtemperatuur	Tunable White, 2700K
Driver positie	Attached to the fixture, Loose driver
Energielabel	A++
Kleurconsistentie (SDCM)	SDCM=3
Primaire aansluitingen	BST 14i2, Europlug, On request, GST18i3, GST18i5 pastelblauw, On the driver
Ambient temperature	-20°C / +40°C
Photobiological safety	IEC 62471: RG1 (low risc)
Light control	1-10V dimming, Casambi dimming, DALI dimming
Emergency lighting	1 hour emergency power, Optional, Optional 1 hour autonomy self-test
Producttoepassing	Education, Hospitality, Office, Public spaces
Family	Fusion
Armaturefficiëntie	>140lm/W
Material	Acrylic, Aluminium, Steel
Optics	Microprismatic lens, Opalen diffusor
Isolatieklasse	Class II
Oriëntatie	Down
Shape	Rectangular
Bevestiging	Recessed

