



MESON ROUND 100 FRESNEL FLAT TRIM

Meson round 100 Fresnel flat trim is a compact LED recessed downlight featuring an efficient power LED. High visual comfort is achieved through its decorative frosted Fresnel lens with concentric rings, ensuring soft and uniform illumination.

- Decorative lighting achieved by a frosted Fresnel optic
- Strong architectural appeal
- Flat trim ring
- IP40 housing (from below)

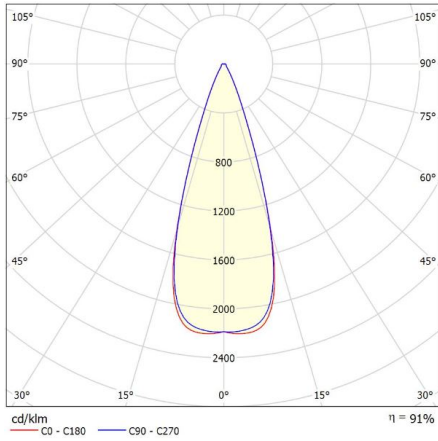
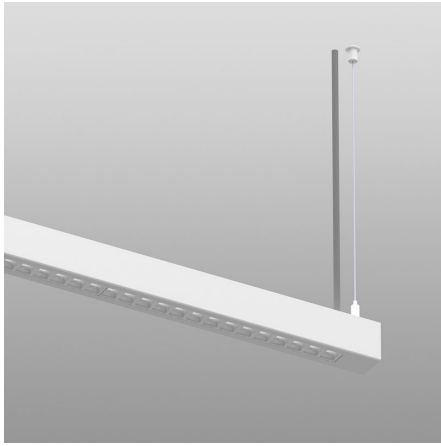
Downloads

[Photometrics Meson round 10 Fresnel](#)

Categories: [Downlights and recessed spotlights](#)



PRODUCT IMAGES



Glare Evaluation According to UGR												
p Ceiling		70	70	50	50	30	70	70	50	50	30	
p Walls		50	30	50	30	30	50	30	50	30	30	
p Floor		20	20	20	20	20	20	20	20	20	20	
Room Size	X	Viewing direction at right angles to lamp axis					Viewing direction parallel to lamp axis					
Y												
2H	2H	13.1	13.8	13.3	14.1	14.3	13.2	13.9	13.4	14.2	14.4	
	3H	15.7	16.4	16.0	16.6	16.9	15.6	16.3	15.9	16.5	16.8	
	4H	17.1	17.7	17.4	18.0	18.3	16.9	17.6	17.2	17.8	18.1	
	6H	18.4	19.0	18.8	19.3	19.7	18.2	18.9	18.6	19.1	19.5	
	8H	19.0	19.6	19.4	19.9	20.3	18.8	19.4	19.2	19.6	20.1	
4H	12H	19.7	20.2	20.0	20.6	20.9	19.5	20.1	19.9	20.4	20.7	
	2H	14.0	14.6	14.3	14.9	15.2	14.0	14.7	14.4	15.0	15.3	
	3H	16.8	17.4	17.2	17.7	18.0	16.7	17.3	17.1	17.6	17.9	
	4H	18.4	18.9	18.8	19.2	19.6	18.2	18.7	18.6	19.0	19.4	
	6H	19.9	20.3	20.3	20.7	21.1	19.7	20.2	20.2	20.5	20.9	
8H	8H	20.6	21.0	21.0	21.4	21.8	20.4	20.8	20.9	21.2	21.6	
	12H	21.3	21.7	21.8	22.1	22.5	21.2	21.5	21.6	21.9	22.4	
	4H	19.0	19.3	19.4	19.7	20.2	18.8	19.2	19.3	19.6	20.0	
	6H	20.7	21.0	21.2	21.4	21.9	20.6	20.9	21.0	21.3	21.8	
	8H	21.5	21.8	22.0	22.3	22.8	21.4	21.7	21.9	22.1	22.6	
12H	12H	22.5	22.7	23.0	23.1	23.7	22.3	22.5	22.8	23.0	23.5	
	4H	19.1	19.4	19.5	19.8	20.3	19.0	19.3	19.4	19.7	20.2	
	6H	20.9	21.1	21.4	21.6	22.1	20.8	21.0	21.3	21.5	22.0	
8H	21.8	22.0	22.3	22.5	23.0	21.7	21.9	22.2	22.4	22.9		
Variation of the observer position for the luminaires distances S												
S = 1.0H		+0.1 / -0.1					+0.1 / -0.1					
S = 1.5H		+0.2 / -0.3					+0.2 / -0.3					
S = 2.0H		+0.3 / -0.4					+0.3 / -0.4					
Standard table		BK11					BK11					
Correction Summand		5.1					4.9					
Corrected glare indices referring to 47lm Total Luminous Flux												

Meson round 100 Fresnel flat trim is a compact LED recessed downlight featuring an efficient power LED. High visual comfort is achieved through its decorative frosted Fresnel lens with concentric rings, ensuring soft and uniform illumination.

- Decorative lighting achieved by a frosted Fresnel optic
- Strong architectural appeal
- Flat trim ring
- IP40 housing (from below)

Downloads

[Photometrics Meson round 10 Fresnel](#)

NOTES

ADDITIONAL INFORMATION

Air extraction	N/A
Armaturefficiëntie	>125lm/W
Bevestiging	Recessed
CIE Flux code	93 100 100 100 100
Driver positie	Loose driver
Energielabel	A++
Family	Meson
Photobiological safety	IEC 62471: RG1 (low risc)
Glare (UGR)	<19
IP-class	IP20 (upwards)/IP40 (downwards)
Isolatieklasse	Class II
Kleurconsistentie (SDCM)	SDCM=2
Kleurtemperatuur	Tunable White, 2700K, 3000K, 3500K, 4000K
Color Rendering Index (CRI)	CRI97, CRI90, CRI80
Light control	1-10V dimming, Casambi dimming, DALI dimming, Optional
Luchtafzuiging	n.v.t.
Material	Acrylic, Steel
Emergency lighting	1 hour emergency power, Optional, Optional 1 hour autonomy self-test
Ambient temperature	-20°C / +40°C
Optics	Lens
Oriëntatie	Down
Packaging dimensions	Bulk packaging
Powerfactor	>9
Primaire aansluitingen	BST 14i2, Europlug, On request, GST18i3, GST18i5 pastelblauw, On the driver
Productkleur	On request
Producttoepassing	Education, Hospitality, Office, Public spaces
Self-adhesive dust cover	Optional
Verpakkingsafmetingen	Bulkverpakking
Verwachte levensduur	L90B50@60,000h (Tq 25°C)

Voltage / frequentie	220-240V, 50 / 60Hz
Shape	Round
Cut-out size	∅86mm
Zelfklevende stofkap	Optioneel

PHOTOMETRIC DATA

44375.27 Meson 100 Fresnel Flat trim 4W 500lm 2700K CRI80 G8
44376.27 Meson 100 Fresnel Flat trim 7W 950lm 2700K CRI80 G8
44377.27 Meson 100 Fresnel Flat trim 11W 1400lm 2700K CRI80 G8

44375.27 Meson 100 Fresnel Flat trim 4W 500lm 2700K CRI80 G8
44376.27 Meson 100 Fresnel Flat trim 7W 950lm 2700K CRI80 G8
44377.27 Meson 100 Fresnel Flat trim 11W 1400lm 2700K CRI80 G8

44375.30 Meson 100 Fresnel Flat trim 4W 500lm 3000K CRI80 G8
44376.30 Meson 100 Fresnel Flat trim 7W 1000lm 3000K CRI80 G8
44377.30 Meson 100 Fresnel Flat trim 11W 1500lm 3000K CRI80 G8

44375.40 Meson 100 Fresnel Flat trim 4W 550lm 4000K CRI80 G8
44376.40 Meson 100 Fresnel Flat trim 7W 1050lm 4000K CRI80 G8
44377.40 Meson 100 Fresnel Flat trim 11W 1500lm 4000K CRI80 G8

44370.27 Meson round 100 Fresnel 4W 500lm 2700K CRI80 G7
44370.27 Meson round 100 Fresnel 6W 700lm 2700K CRI80 G7
44370.27 Meson round 100 Fresnel 7W 950lm 2700K CRI80 G7
44370.30 Meson round 100 Fresnel 4W 500lm 3000K CRI80 G7
44370.30 Meson round 100 Fresnel 6W 750lm 3000K CRI80 G7
44370.30 Meson round 100 Fresnel 9W 1200lm 3000K CRI80 G7 - copy
44370.30 Meson round 100 Fresnel 9W 1200lm 3000K CRI80 G7
44370.40 Meson round 100 Fresnel 4W 500lm 4000K CRI80 G7
44370.40 Meson round 100 Fresnel 6W 750lm 4000K CRI80 G7
44370.40 Meson round 100 Fresnel 9W 1250lm 4000K CRI80 G7
44370.TW Meson round 100 Fresnel 9W 1200lm 2700-6500K CRI80 G7

44370.27 Meson 100 Fresnel 4W 500lm 2700K CRI80 G8
44371.27 Meson 100 Fresnel 7W 950lm 2700K CRI80 G8
44372.27 Meson 100 Fresnel 11W 1400lm 2700K CRI80 G8

44370.30 Meson 100 Fresnel 4W 500lm 3000K CRI80 G8
44371.30 Meson 100 Fresnel 7W 1000lm 3000K CRI80 G8
44372.30 Meson 100 Fresnel 11W 1500lm 3000K CRI80 G8

44370.40 Meson 100 Fresnel 4W 550lm 4000K CRI80 G8
44371.40 Meson 100 Fresnel 7W 1050lm 4000K CRI80 G8
44372.40 Meson 100 Fresnel 11W 1500lm 4000K CRI80 G8