



MESON ROUND 190-C

Meson round 190-C is a high-quality surface-mounted LED downlight featuring power LEDs covered by a prismatic lens or a double satin diffuser. The trim is recessed into the cover rim and combined with a matte or high-gloss glare-reducing reflector.

- Housing in matte white or matte black
- Reflector ring available in matte anodized, glossy anodized, matte black, or matte white
- Opal diffuser or prismatic lens
- Emergency lighting versions available

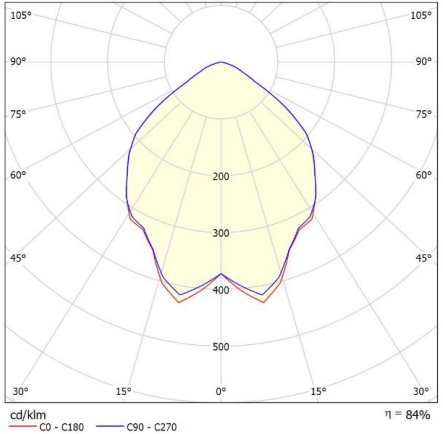
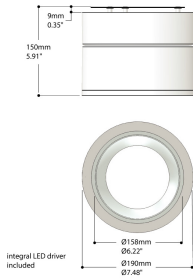
Downloads

[Photometrics Meson round 190-C](#)

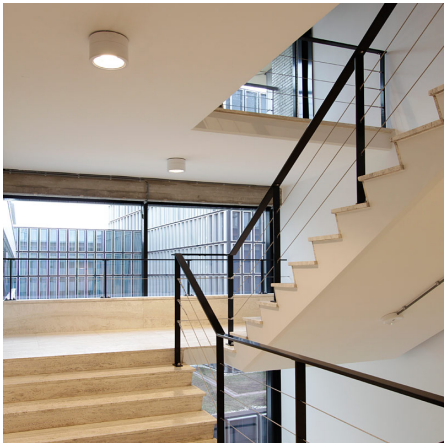
Categories: [Surface-mounted luminaires](#)

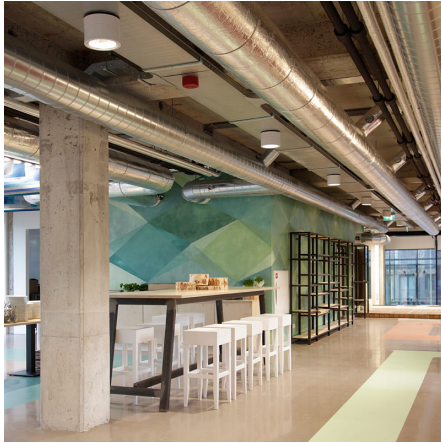


PRODUCT IMAGES



f-waardering volgens UGR												
p Plafond		70	70	50	50	30	70	70	50	50	30	
p Muren		50	30	50	30	30	50	30	50	30	30	
p Vloer		20	20	20	20	20	20	20	20	20	20	
Ruimteafmeting X Y		Perspectief dwars t.o.v. lampen					Perspectief langs t.o.v. lampen					
2H	2H	18.9	20.0	19.1	20.2	20.4	18.9	20.0	19.1	20.2	20.4	
	3H	18.9	20.0	19.3	20.2	20.5	18.9	19.9	19.2	20.1	20.4	
	4H	18.9	19.9	19.2	20.1	20.4	18.9	19.8	19.2	20.1	20.4	
	6H	18.9	19.7	19.2	20.0	20.3	18.8	19.7	19.2	20.0	20.3	
	8H	18.8	19.6	19.2	20.0	20.3	18.8	19.6	19.2	19.9	20.2	
	12H	18.8	19.6	19.2	19.9	20.2	18.8	19.6	19.1	19.9	20.2	
4H	2H	18.9	19.9	19.2	20.1	20.4	18.9	19.8	19.2	20.1	20.4	
	3H	19.1	19.8	19.4	20.2	20.5	19.0	19.8	19.4	20.1	20.5	
	4H	19.1	19.7	19.5	20.1	20.4	19.0	19.7	19.4	20.1	20.4	
	6H	19.0	19.6	19.4	20.0	20.4	19.0	19.6	19.4	20.0	20.3	
	8H	19.0	19.5	19.4	19.9	20.3	19.0	19.5	19.4	19.9	20.3	
	12H	18.9	19.4	19.4	19.8	20.3	18.9	19.4	19.4	19.8	20.2	
8H	4H	19.0	19.5	19.4	19.9	20.3	19.0	19.5	19.4	19.9	20.3	
	6H	18.9	19.4	19.4	19.8	20.2	18.9	19.4	19.4	19.8	20.2	
	8H	18.9	19.3	19.4	19.7	20.2	18.9	19.3	19.4	19.7	20.2	
	12H	18.9	19.2	19.3	19.7	20.2	18.8	19.2	19.3	19.6	20.1	
	4H	19.0	19.4	19.4	19.8	20.3	18.9	19.4	19.4	19.8	20.3	
	6H	18.9	19.3	19.4	19.7	20.2	18.9	19.3	19.4	19.7	20.2	
12H	8H	18.9	19.2	19.3	19.7	20.2	18.8	19.2	19.3	19.6	20.1	
	12H	18.9	19.2	19.3	19.7	20.2	18.8	19.2	19.3	19.6	20.1	
Variatie op waardenperspectief voor lampstanden S												
S = 1.0H		+0.6 / -1.2					+0.6 / -1.1					
S = 1.5H		+1.7 / -4.2					+1.7 / -4.3					
S = 2.0H		+3.2 / -5.7					+3.2 / -5.9					
Standtafel		BK01					BK01					
Correctie-optel							0.5					
Gecorrigeerde verblindingindicatie in relatie tot 2041lm Totale lichtstroom												





Meson round 190-C is a high-quality surface-mounted LED downlight featuring power LEDs covered by a prismatic lens or a double satin diffuser. The trim is recessed into the cover rim and combined with a matte or high-gloss glare-reducing reflector.

- Housing in matte white or matte black
- Reflector ring available in matte anodized, glossy anodized, matte black, or matte white
- Opal diffuser or prismatic lens
- Emergency lighting versions available

Downloads

[Photometrics Meson round 190-C](#)

NOTES

ADDITIONAL INFORMATION

Isolatieklasse	Class II
Photobiological safety	IEC 62471: RG1 (low risc)
Kleurtemperatuur	Tunable White, 2700K
Ambient temperature	-20°C / +40°C
Light control	1-10V dimming, Casambi dimming, DALI dimming
Emergency lighting	1 hour emergency power, Optional, Optional 1 hour autonomy self-test
Productkleur	On request
Producttoepassing	Education, Hospitality, Office, Public spaces
Optics	Microprismatic lens, Opalen diffusor
Primaire aansluitingen	On request, On the driver
Family	Meson
Driver positie	Integrated
Material	Acrylic, Steel
Oriëntatie	Down
Bevestiging	Ceiling mounting
Shape	Round

