



METRONOME-S WHITE

Metronome-S white is a linear LED pendant luminaire equipped with 36 or 28 lenses, recessed behind a grid-shaped louver. The optics are positioned at the bottom as standard, and versions with direct and indirect lighting (UP/DOWN) are also available. A choice can be made between < optics (standard) and <16

- Architectural appearance with 36 or 28 optics
- Choice between UGR< 19 and UGR< 16 optics
- Louver finish white
- Versions with direct and indirect lighting (UP/DOWN) are available

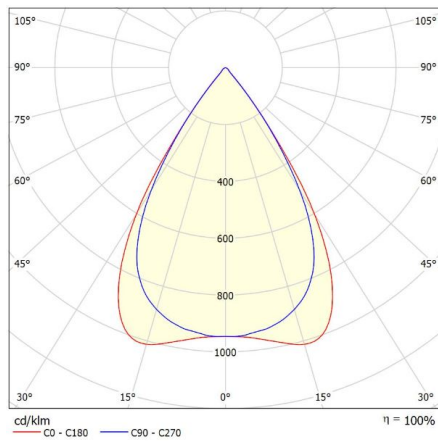
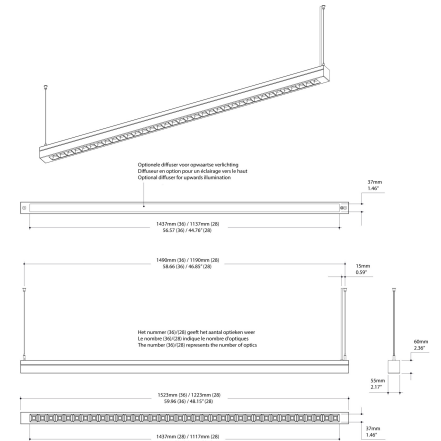
Downloads

[Photometrics Metronome-S](#)

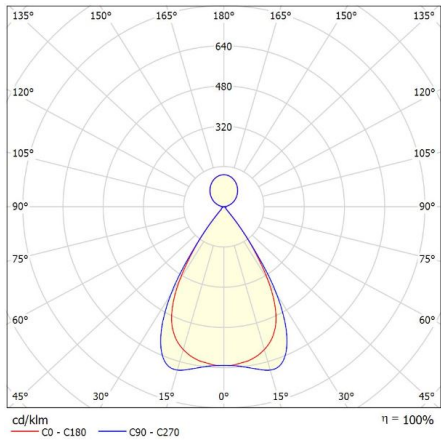
Categories: [Pendant luminaires](#)



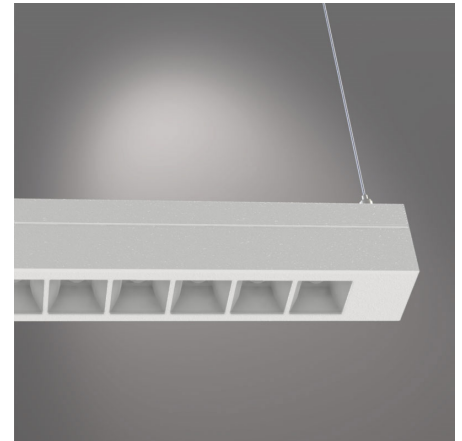
PRODUCT IMAGES

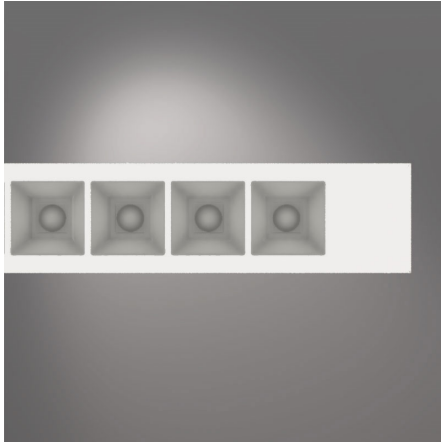


Glare Evaluation According to UGR												
p Ceiling	70	70	50	50	30	70	70	50	50	30	30	
p Walls	50	30	50	30	30	50	30	50	30	30	30	
p Floor	20	20	20	20	20	20	20	20	20	20	20	
Room Size X Y	Viewing direction at right angles to lamp axis					Viewing direction parallel to lamp axis						
2H	2H	15.9	16.6	16.2	16.8	17.0	15.2	15.9	15.5	16.1	16.3	
3H	3H	15.8	16.5	16.1	16.7	16.9	15.1	15.7	15.4	16.0	16.2	
4H	4H	15.8	16.4	16.1	16.6	16.9	15.1	15.7	15.4	15.9	16.2	
6H	6H	15.7	16.3	16.0	16.5	16.8	15.0	15.5	15.3	15.8	16.1	
8H	8H	15.7	16.2	16.0	16.5	16.8	15.0	15.5	15.3	15.8	16.1	
12H	12H	15.7	16.1	16.0	16.4	16.7	14.9	15.4	15.3	15.7	16.0	
4H	2H	15.8	16.3	16.1	16.6	16.9	15.1	15.6	15.4	15.9	16.1	
3H	3H	15.7	16.2	16.0	16.5	16.8	15.0	15.5	15.3	15.8	16.1	
4H	4H	15.6	16.0	16.0	16.4	16.7	14.9	15.4	15.3	15.7	16.0	
6H	6H	15.6	15.9	16.0	16.3	16.7	14.9	15.2	15.3	15.6	16.0	
8H	8H	15.5	15.8	15.9	16.2	16.6	14.8	15.1	15.3	15.5	15.9	
12H	12H	15.5	15.8	15.9	16.2	16.6	14.8	15.1	15.2	15.5	15.9	
8H	4H	15.5	15.8	15.9	16.2	16.6	14.8	15.1	15.3	15.5	15.9	
6H	6H	15.5	15.7	15.9	16.1	16.6	14.8	15.0	15.2	15.4	15.9	
8H	8H	15.4	15.6	15.9	16.1	16.5	14.7	14.9	15.2	15.4	15.8	
12H	12H	15.4	15.5	15.9	16.0	16.5	14.7	14.8	15.2	15.3	15.8	
4H	4H	15.5	15.8	15.9	16.2	16.6	14.8	15.1	15.2	15.5	15.9	
6H	6H	15.4	15.6	15.9	16.0	16.5	14.7	14.9	15.2	15.4	15.8	
8H	8H	15.4	15.5	15.9	16.0	16.5	14.7	14.8	15.2	15.3	15.8	
Variation of the observer position for the luminaire distances S												
S = 1.0H		+5.6	/	-8.4			+5.2	/	-7.9			
S = 1.5H		+8.4	/	-9.2			+7.9	/	-8.8			
S = 2.0H		+10.4	/	-10.5			+9.9	/	-9.7			
Standard table		BK00					BK00					
Correction		-2.7					-3.4					
Summand												
Corrected Glare Indices referring to 4232lm Total Luminaire Flux												



f-waardering volgens UGR												
p Plafond	70	70	50	50	30	70	70	50	50	30	70	30
p Muren	50	30	50	30	30	50	30	50	30	30	50	30
p Vloer	20	20	20	20	20	20	20	20	20	20	20	20
Ruimteafmeting	Perspectief divers					Perspectief langs						
X Y	t.o.v. lampen					t.o.v. lampen						
2H	2H	16.7	17.4	16.9	17.6	17.8	16.0	16.7	16.2	16.8	17.0	
3H	3H	16.6	17.2	16.9	17.5	17.7	15.9	16.5	16.2	16.7	17.0	
4H	4H	16.5	17.1	16.9	17.4	17.6	15.8	16.4	16.1	16.7	16.9	
6H	6H	16.5	17.0	16.8	17.3	17.6	15.8	16.3	16.1	16.6	16.9	
8H	8H	16.4	17.0	16.8	17.2	17.5	15.7	16.3	16.1	16.5	16.8	
12H	12H	16.4	16.9	16.8	17.2	17.5	15.7	16.2	16.1	16.5	16.8	
4H	2H	16.5	17.1	16.8	17.4	17.6	15.8	16.4	16.1	16.6	16.9	
3H	3H	16.4	16.9	16.8	17.2	17.5	15.7	16.2	16.1	16.5	16.8	
4H	4H	16.4	16.8	16.8	17.1	17.5	15.7	16.1	16.1	16.4	16.8	
6H	6H	16.3	16.7	16.7	17.0	17.4	15.6	16.0	16.0	16.3	16.7	
8H	8H	16.3	16.6	16.7	17.0	17.4	15.6	15.9	16.0	16.3	16.7	
12H	12H	16.3	16.5	16.7	16.9	17.3	15.6	15.8	16.0	16.2	16.7	
4H	4H	16.3	16.6	16.7	17.0	17.4	15.6	15.9	16.0	16.3	16.7	
6H	6H	16.2	16.5	16.7	16.9	17.3	15.5	15.8	16.0	16.2	16.6	
8H	8H	16.2	16.4	16.6	16.8	17.3	15.5	15.7	16.0	16.1	16.6	
12H	12H	16.1	16.3	16.6	16.8	17.2	15.5	15.6	15.9	16.1	16.6	
4H	4H	16.3	16.5	16.7	16.9	17.3	15.6	15.8	16.0	16.2	16.6	
6H	6H	16.2	16.4	16.6	16.8	17.3	15.5	15.7	16.0	16.1	16.6	
8H	8H	16.1	16.3	16.6	16.8	17.2	15.5	15.6	15.9	16.1	16.6	
Variatie op waarnemerspositie voor lampafstanden S												
S = 1.0H		+5.6	/	-8.4			+5.2	/	-7.9			
S = 1.5H		+8.4	/	-9.2			+7.9	/	-8.8			
S = 2.0H		+10.4	/	-10.5			+9.9	/	-9.7			
Standartaftabel		BK00					BK00					
Correctie-optel		-1.9					-2.6					
Gecorrigeerde verblindingindicatie in relatie tot 409lm Totale lichtstroom												





Metronome-S white is a linear LED pendant luminaire equipped with 36 or 28 lenses, recessed behind a grid-shaped louver. The optics are positioned at the bottom as standard, and versions with direct and indirect lighting (UP/DOWN) are also available. A choice can be made between ≤ 19 optics (standard) and ≤ 16

- Architectural appearance with 36 or 28 optics
- Choice between $\text{UGR} < 19$ and $\text{UGR} < 16$ optics
- Louver finish white
- Versions with direct and indirect lighting (UP/DOWN) are available

Downloads

[Photometrics Metronome-S](#)

NOTES

ADDITIONAL INFORMATION

Producttoepassing	Education, Hospitality, Office, Public spaces
Shape	Rectangular
Energielabel	A++
Glare (UGR)	<19
Kleurtemperatuur	Tunable White, 2700K
Voltage / frequency	220-240V, 50 / 60Hz
Verwachte levensduur	L90B50@60,000h (Tq 25°C)
Color Rendering Index (CRI)	CRI90, CRI80
IP-class	IP20 (upwards)/IP40 (downwards)
Light control	1-10V dimming, Casambi dimming, DALI dimming
Emergency lighting	1 hour emergency power, Optional, Optional 1 hour autonomy self-test
Primaire aansluitingen	GST18i5 pastelblauw, Kabel
Productkleur	On request
Isolatieklasse	Class II, Class-I
Self-adhesive dust cover	Optional
Spot bundle (FWHM)	
Air extraction	N/A
Family	Metronome
Armatuurefficiëntie	>140lm/W
Bevestiging	Pendant
Optics	Lens en louver
Material	Steel
Length	
Breedte	50mm
Packaging dimensions	Bulk packaging
CIE Flux code	96 99 100 100 100
Powerfactor	>0.9
Driver positie	Integrated
Ambient temperature	-20°C / +40°C
Kleurconsistentie (SDCM)	SDCM=3

Oriëntatie

Down, Up+Down

Photobiological safety

IEC 62471: RG1 (low risc)

Hoogte

