



SIRIO SAPP 1200

A linear lighting fixture with lenses for use in Interlu SAPP® ceilings. Sirio SAPP 1200 can be placed between structures, creating an integrated system with the ceiling without disrupting the architectural appearance.

- Sirio SAPP 1200 can be placed between structures, creating an integrated system with the ceiling without disrupting the architectural appearance.
- Provides highly controlled light distribution, excellent uniformity and $UGR < 19$
- The fixture complies with NEN-EN 12464-1

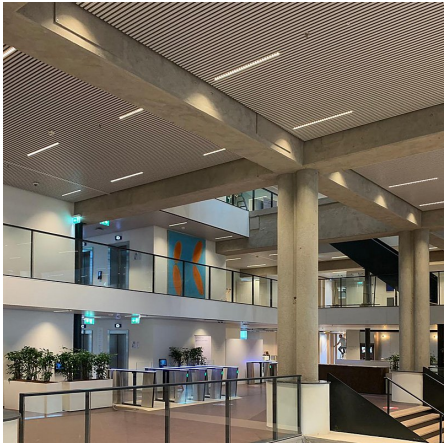
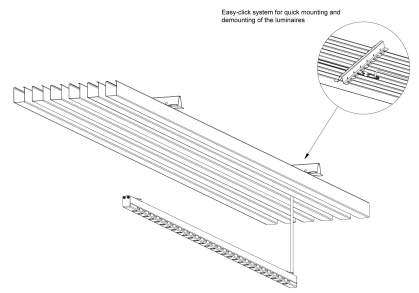
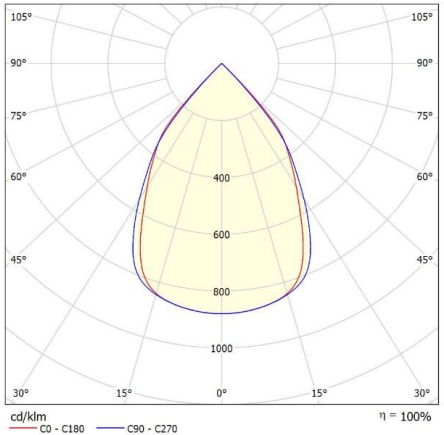
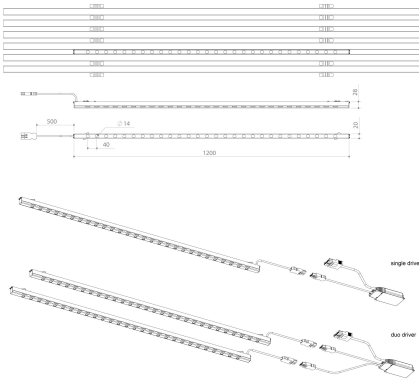
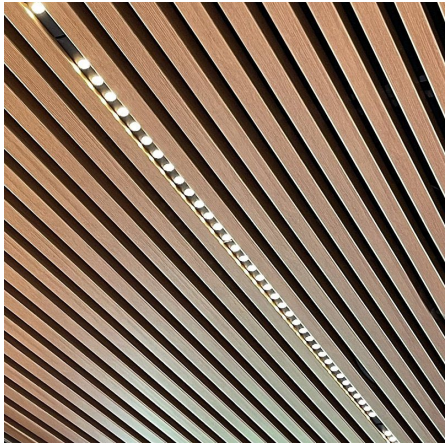
Downloads

[Photometrics Sirio SAPP](#)

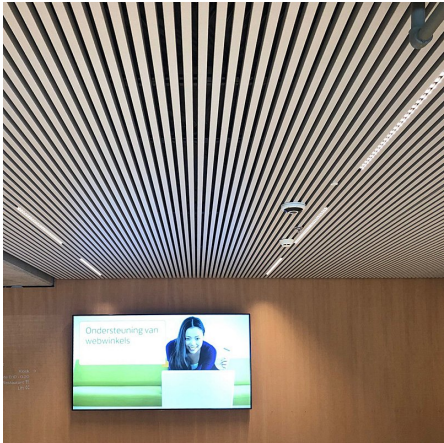
Categories: [Climate ceiling fixtures](#), [Baffle luminaires](#)

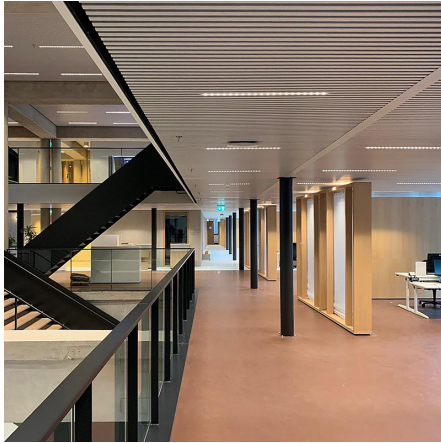


PRODUCT IMAGES



f-waardering volgens UGR												
p. Plafond	70	70	50	50	30	70	70	50	50	30	30	
p. Muren	50	30	50	30	30	50	30	50	30	30	30	
p. Voer	20	20	20	20	20	20	20	20	20	20	20	
Ruimteafmeting	Perspectief divers					Perspectief langs						
X	t.o.v. lampen					t.o.v. lampen						
Y												
2H	2H	18.9	19.7	19.2	19.9	20.0	18.7	19.4	18.9	19.6	19.8	
	3H	18.8	19.5	19.1	19.7	19.9	18.6	19.2	18.8	19.4	19.7	
	4H	18.7	19.3	19.0	19.6	19.9	18.5	19.1	18.8	19.4	19.6	
	6H	18.7	19.2	19.0	19.5	19.8	18.4	19.0	18.7	19.3	19.5	
	8H	18.6	19.2	19.0	19.5	19.8	18.4	18.9	18.7	19.2	19.5	
4H	12H	18.6	19.1	19.0	19.4	19.7	18.4	18.9	18.7	19.2	19.5	
	2H	18.7	19.3	19.0	19.6	19.9	18.5	19.1	18.8	19.3	19.6	
	3H	18.6	19.1	18.9	19.4	19.7	18.3	18.9	18.7	19.2	19.5	
	4H	18.5	19.0	18.9	19.3	19.6	18.3	18.7	18.7	19.0	19.4	
	6H	18.5	18.8	18.9	19.2	19.6	18.2	18.6	18.6	18.9	19.3	
8H	8H	18.4	18.8	18.8	19.1	19.5	18.2	18.5	18.6	18.9	19.3	
	12H	18.4	18.7	18.8	19.1	19.5	18.1	18.4	18.6	18.8	19.2	
	4H	18.4	18.7	18.8	19.1	19.5	18.2	18.5	18.6	18.9	19.3	
	6H	18.3	18.6	18.8	19.0	19.5	18.1	18.3	18.5	18.8	19.2	
	8H	18.3	18.5	18.8	19.0	19.4	18.1	18.3	18.5	18.7	19.2	
12H	12H	18.3	18.4	18.8	18.9	19.4	18.0	18.2	18.5	18.6	19.1	
	4H	18.4	18.7	18.8	19.1	19.5	18.1	18.4	18.6	18.8	19.2	
	6H	18.3	18.5	18.8	19.0	19.4	18.1	18.3	18.5	18.7	19.2	
	8H	18.3	18.4	18.8	18.9	19.4	18.0	18.2	18.5	18.6	19.1	
	8H	18.3	18.4	18.8	18.9	19.4	18.0	18.2	18.5	18.6	19.1	
Variatie op waarnemingspositie voor lampstanden 5												
S = 1.0H		+3.3	/	-13.0			+4.2	/	-13.3			
S = 1.5H		+6.0	/	-13.9			+7.0	/	-14.6			
S = 2.0H		+8.0	/	-14.2			+9.0	/	-15.2			
Standaardtabel		BK00					BK00					
Correctie-opteltal		0.3					0.0					
Geconcentreerde verlichtingsindicatie in relatie tot 2726lm Totale lichtstroom												





A linear lighting fixture with lenses for use in Interlu SAPP® ceilings. Sirio SAPP 1200 can be placed between structures, creating an integrated system with the ceiling without disrupting the architectural appearance.

- Sirio SAPP 1200 can be placed between structures, creating an integrated system with the ceiling without disrupting the architectural appearance.
- Provides highly controlled light distribution, excellent uniformity and UGR < 19
- The fixture complies with NEN-EN 12464-1

Downloads

[Photometrics Sirio SAPP](#)

NOTES

ADDITIONAL INFORMATION

Driver positie	Loose driver
Producttoepassing	Education, Hospitality, Office, Public spaces
Shape	Rectangular
Kleurtemperatuur	Tunable White, 2700K
Light control	1-10V dimming, Casambi dimming, DALI dimming
Emergency lighting	1 hour emergency power, Optional, Optional 1 hour autonomy self-test
Primaire aansluitingen	BST 14i2, Europlug, On request, GST18i3, GST18i5 pastelblauw, On the driver
Optics	Lens en louver
Air extraction	N/A
Family	Sirio
Voltage / frequency	220-240V, 50 / 60Hz
Bevestiging	Recessed
Powerfactor	>0.9
Ambient temperature	-20°C / +40°C
Oriëntatie	Down
Material	Acrylic, Steel
IP-class	IP20 (upwards)/IP40 (downwards)
Packaging dimensions	Bulk packaging
CIE Flux code	94 100 100 100 100
Isolatieklasse	Class II
Kleurconsistentie (SDCM)	SDCM=3
Photobiological safety	IEC 62471: RG1 (low risc)
Specification date	Specificatiedatum
Specificaties	G7D1 / 06-02-2025

