



SIRIO WEC

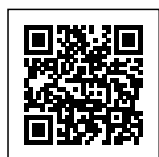
Sleek linear lighting fixture with lenses for use in V-shaped [Interalu WEC® ceilings](#).

- Independent of the climate circuit: relocatable after installation
- Easy installation with spring clips
- Available in three lengths 900, 1200 and 1500
- Unique lens configuration UGR< 19 office-compatible

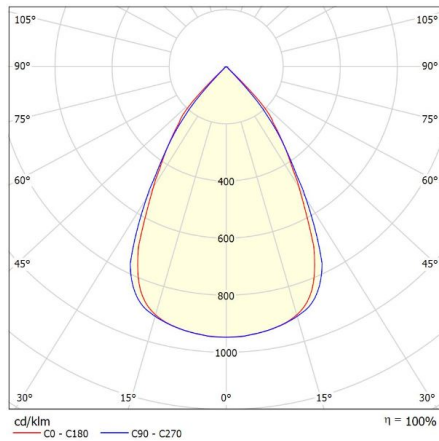
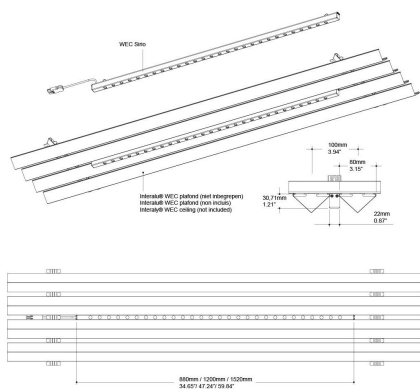
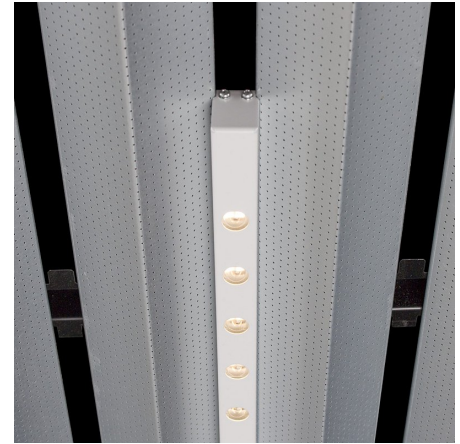
Downloads

[Photometrics Sirio-WEC](#)

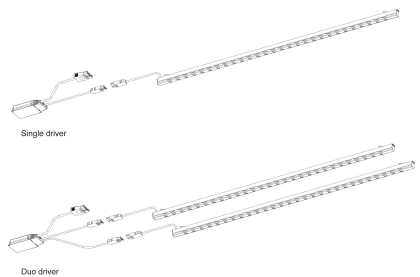
Categories: [Climate ceiling fixtures](#), [Baffle luminaires](#)



PRODUCT IMAGES



Glare Evaluation According to UGR													
p Ceiling		70	70	50	50	30	70	70	50	50	30	30	
p Walls		50	30	50	30	30	50	30	50	30	50	30	
p Floor		20	20	20	20	20	20	20	20	20	20	20	
Room Size		Viewing direction at right angles to lamp axis						Viewing direction parallel to lamp axis					
X	Y	X	Y	X	Y	X	Y	X	Y	X	Y	X	Y
2H	2H	18.6	19.4	18.9	19.6	19.8	18.3	19.0	18.5	19.2	19.4	19.2	19.4
	4H	18.6	19.2	18.8	19.4	19.7	18.1	18.8	18.4	19.0	19.2	18.7	19.0
	6H	18.5	19.1	18.8	19.3	19.6	18.1	18.7	18.4	18.9	19.2	18.7	19.0
	8H	18.4	18.9	18.7	19.2	19.5	18.0	18.5	18.3	18.8	19.1	18.7	19.0
	12H	18.3	18.8	18.7	19.1	19.5	17.9	18.4	18.3	18.7	19.0	18.7	19.0
4H	2H	18.5	19.1	18.8	19.3	19.6	18.1	18.7	18.4	18.9	19.2	18.9	19.2
	4H	18.3	18.8	18.7	19.1	19.5	17.9	18.4	18.3	18.7	19.0	18.7	19.0
	6H	18.3	18.7	18.6	19.0	19.4	17.9	18.3	18.2	18.6	19.0	18.7	19.0
	8H	18.2	18.6	18.6	18.9	19.3	17.8	18.1	18.2	18.5	18.9	18.7	19.0
	12H	18.2	18.5	18.6	18.9	19.3	17.8	18.1	18.2	18.5	18.9	18.7	19.0
6H	2H	18.4	18.9	18.6	19.1	19.4	17.8	18.3	18.2	18.6	19.0	18.8	19.1
	4H	18.2	18.5	18.6	18.9	19.3	17.7	18.1	18.2	18.4	18.8	18.8	19.1
	6H	18.1	18.3	18.5	18.7	19.2	17.7	17.9	18.1	18.3	18.6	18.8	19.1
	8H	18.0	18.2	18.5	18.7	19.2	17.6	17.8	18.1	18.3	18.7	18.8	19.1
	12H	18.0	18.2	18.5	18.7	19.2	17.6	17.8	18.1	18.3	18.7	18.8	19.1
8H	2H	18.4	18.9	18.6	19.1	19.4	17.8	18.3	18.2	18.6	19.0	18.8	19.1
	4H	18.2	18.5	18.6	18.9	19.3	17.7	18.1	18.2	18.4	18.8	18.8	19.1
	6H	18.1	18.3	18.5	18.7	19.2	17.7	17.9	18.1	18.3	18.6	18.8	19.1
	8H	18.0	18.2	18.5	18.7	19.2	17.6	17.8	18.1	18.3	18.7	18.8	19.1
	12H	18.0	18.2	18.5	18.7	19.2	17.6	17.8	18.1	18.3	18.7	18.8	19.1
12H	2H	18.1	18.4	18.6	18.8	19.2	17.7	18.0	18.1	18.4	18.8	18.8	19.1
	4H	18.0	18.2	18.5	18.7	19.2	17.6	17.8	18.1	18.3	18.7	18.8	19.1
	6H	18.0	18.2	18.5	18.6	19.1	17.6	17.7	18.1	18.2	18.7	18.8	19.1
	8H	18.0	18.2	18.5	18.6	19.1	17.6	17.7	18.1	18.2	18.7	18.8	19.1
	12H	18.0	18.2	18.5	18.6	19.1	17.6	17.7	18.1	18.2	18.7	18.8	19.1
Variation of the observer position for the luminaires distances S													
S = 1.0H		+3.8 / -12.2						+4.7 / -13.4					
S = 1.5H		+6.5 / -14.3						+7.5 / -14.8					
S = 2.0H		+8.5 / -15.6						+9.5 / -15.6					
Standard table		BK00						BK05					
Summard		0.0						-0.4					
Corrected Glare Index referring to 230lm/m² total Luminous Flux													



Sleek linear lighting fixture with lenses for use in V-shaped [Interalu WEC® ceilings](#).

- Independent of the climate circuit: relocatable after installation
- Easy installation with spring clips
- Available in three lengths 900, 1200 and 1500
- Unique lens configuration UGR< 19 office-compatible

Downloads

[Photometrics Sirio-WEC](#)

NOTES

ADDITIONAL INFORMATION

Isolatieklasse	Class-I
Producttoepassing	Education, Hospitality, Office, Public spaces
Kleurtemperatuur	Tunable White, 2700K
Primaire aansluitingen	BST 14i2, Europlug, On request, GST18i3, GST18i5 pastelblauw, On the driver
Light control	1-10V dimming, Casambi dimming, DALI dimming
Emergency lighting	1 hour emergency power, Optional, Optional 1 hour autonomy self-test
Productkleur	On request
Self-adhesive dust cover	Optional
Air extraction	N/A
Family	Sirio
CIE Flux code	93 100 100 100 100
Kleurconsistentie (SDCM)	SDCM=3
Driver positie	Loose driver
Ambient temperature	-20°C / +40°C
IP-class	IP20 (upwards)/IP40 (downwards)
Optics	Lens en louver
Oriëntatie	Down
Packaging dimensions	Bulk packaging
Bevestiging	Recessed
Material	Acrylic, Steel
Shape	Rectangular
Photobiological safety	IEC 62471: RG1 (low risc)
Specificaties	G7D1 / 06-02-2025

